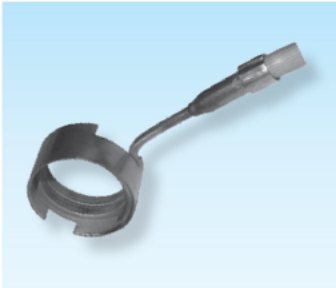


## Rohrheizpatronen

## Tabular heating elements

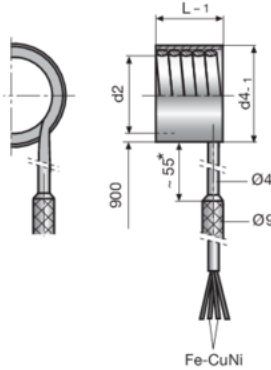
## Éléments chauffants tubulaires



Z7016-

230 V

Z7016-d2-L



\* nicht biegefähig  
not flexible  
n'est pas flexible

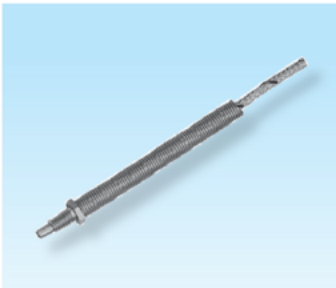
d2	L	d4	Watt
24	17	31	250
28	17	35	250
32	25	39	450
38	17	45	250
42	17	45	250

## Thermofühler

## Thermocouple

## Thermocouple

7



Z7022

Mat.: Fe-Cuni Typ J  
max. 400 °C

Z7022

