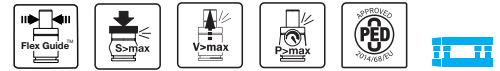


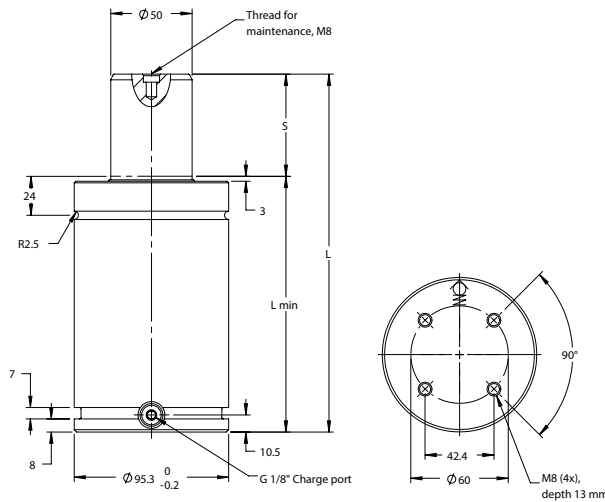


TL-3000
Gasdruckfeder



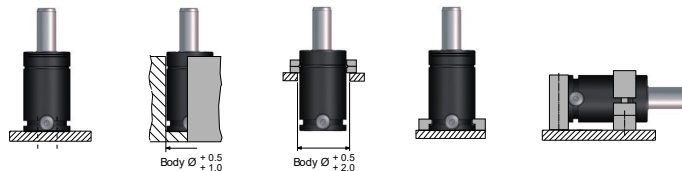
- Grün
- Blau
- Rot
- Gelb
- Schwarz

T: < 80 °C



$S = \text{Hub}$

S1	S	L ± 0.25	L min	F1 [daN]	F2 [daN]	m [kg]	V [L]	Order No.
13	12.5	120	107.5	3000	3870	4.84	0.14	TL-3000-13
25	25	145	120	3000	4180	5.24	0.21	TL-3000-25
38	37.5	170	132.5	3000	4350	5.64	0.27	TL-3000-38
50	50	195	145	3000	4440	6.03	0.33	TL-3000-50
63	62.5	220	157.5	3000	4510	6.44	0.40	TL-3000-63
75	75	245	170	3000	4550	6.83	0.46	TL-3000-75
80	80	255	175	3000	4560	7.12	0.48	TL-3000-80
88	87.5	270	182.5	3000	4580	7.24	0.52	TL-3000-88
100	100	295	195	3000	4610	7.62	0.58	TL-3000-100
113	112.5	320	207.5	3000	4630	8.02	0.65	TL-3000-113
125	125	345	220	3000	4650	8.41	0.71	TL-3000-125
138	137.5	370	232.5	3000	4660	8.84	0.77	TL-3000-138
150	150	395	245	3000	4680	9.21	0.84	TL-3000-150
160	160	415	255	3000	4690	9.53	0.89	TL-3000-160
175	175	445	270	3000	4700	10.00	0.96	TL-3000-175
200	200	495	295	3000	4710	10.79	1.09	TL-3000-200
225	225	545	320	3000	4720	11.59	1.21	TL-3000-225
250	250	595	345	3000	4730	12.38	1.34	TL-3000-250



Druckmedium	N2
Max. Fülldruck (bei 20° C)	150 bar
Min. Fülldruck (bei 20° C)	25 bar
Betriebstemperatur	0° C - 80° C
Temperaturabhängige Druckerhöhung	0,3% / 1° C
Max. Kolbengeschwindigkeit	1,6 m/s
Empfohlene max Hübe / min (bei 20° C)	~ 15 - 40
Instandhaltungsset	3024171