

## Technical information – Automatik transport lock R1025 / R1026

- Automatic locking
- Simple and robust construction
- Absolutely reliable in operation
- Short setting-up- and changeover times

The automatic transport lock R1025 / R1026 avoids the unintentional opening at the mounting- and dismounting of the injection mould as well as at the transport.

This safety system allows smaller setting-up- respectively changeover times and guarantees highest security by an automatic locking of both mould halves.

At the mounting of the mould in the injection moulding machine, the opening of the mould will only be possible if the mounting plate on the moving mould half is closely laying at the machine table.

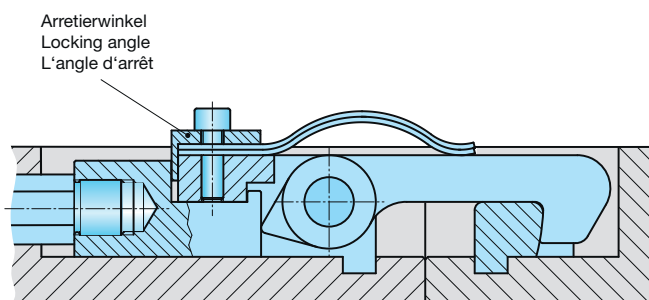
At the dismounting from the moulding machine, the mould halves are automatically locked, as soon as the mounting plate on the moving mould half will be loosed from the machine table. The simple and robust design make the transport lock absolutely reliable in operation.

### Mounting recommendations:

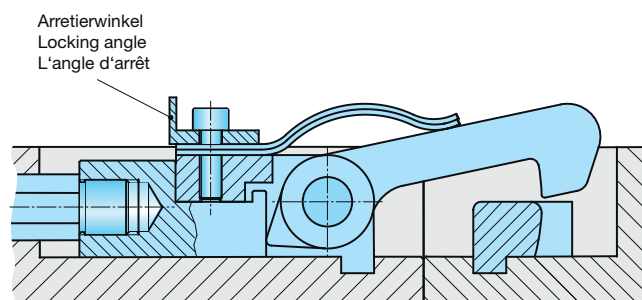
Moulds under 1,500 kg	min. 1 x R 1025
Moulds from 1,500 kg until 6,000 kg	min. 2 x R 1025
Moulds over 6,000 kg	min. 4 x R 1025

For the locking of the injection moulds, the locking angle of the injection moulds is additionally screwed the other way round at the transport and at the tool store.

### Mould locked and secured



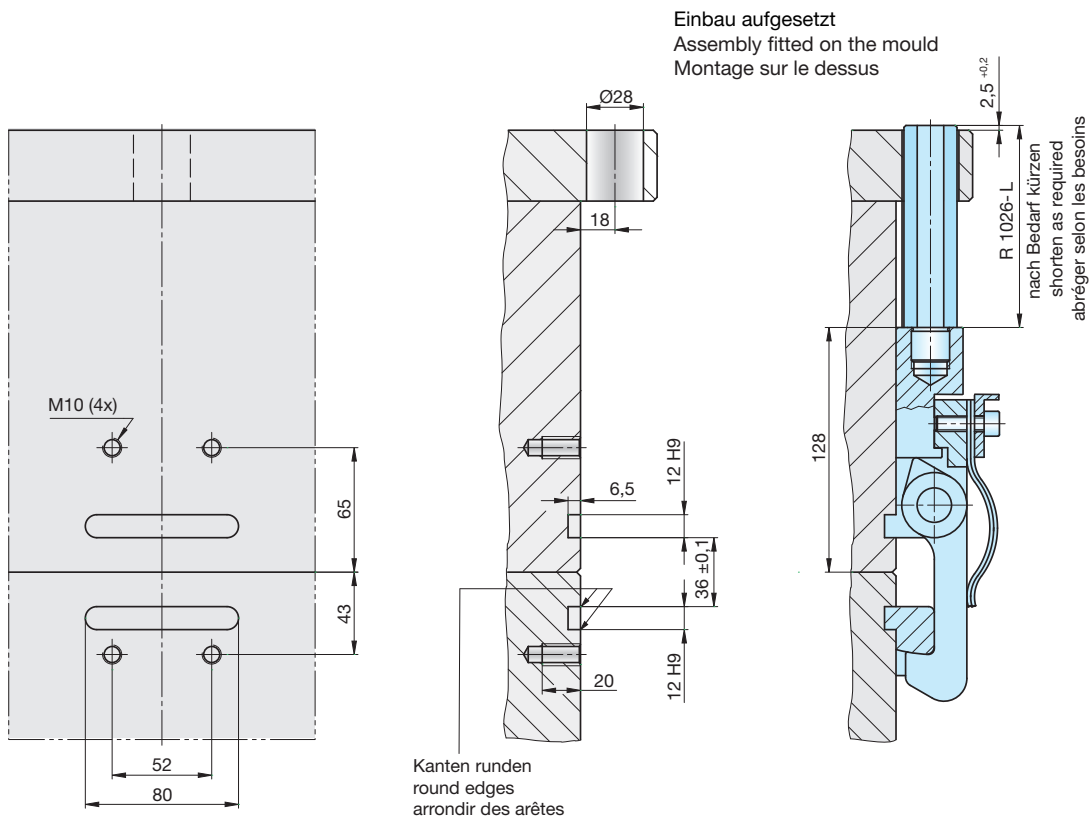
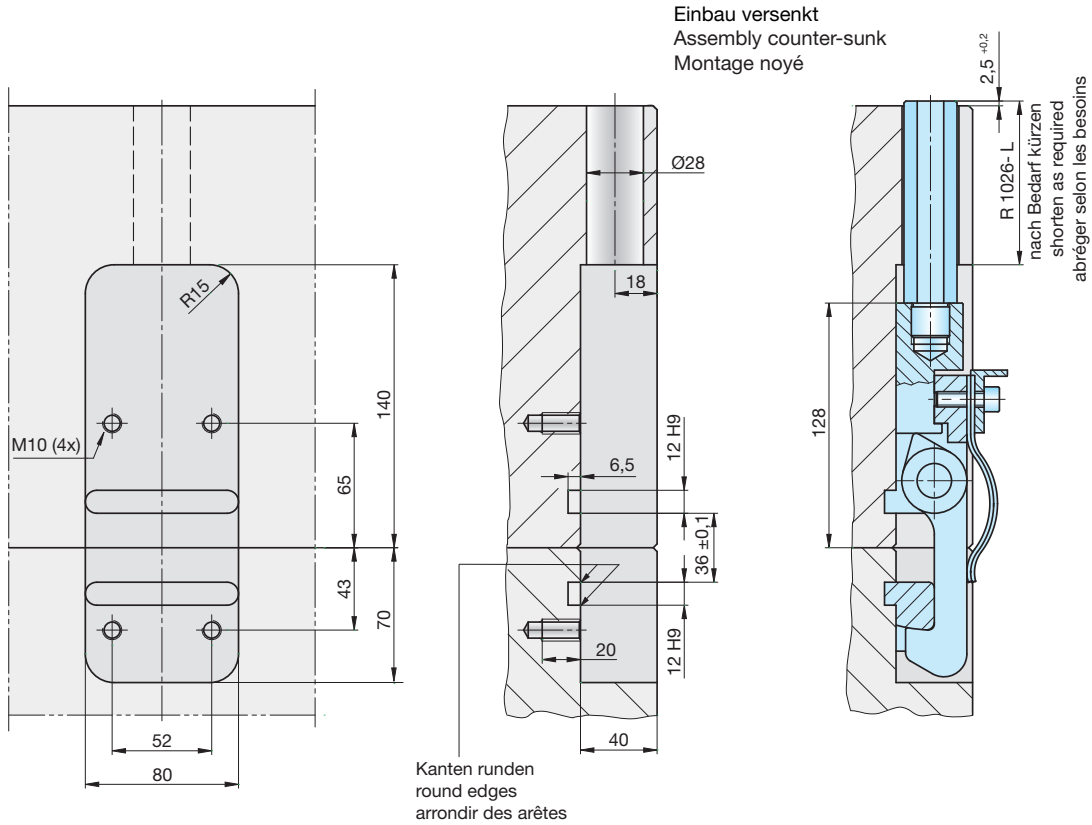
### Mould unlocked



## Montagevarianten

## Assembly options

## Variantes de montage



## Funktion

## Mode of operation

## Function

