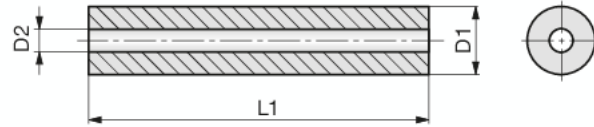
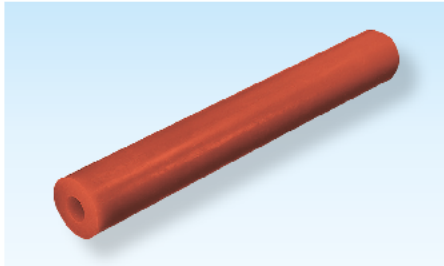


3

Elastomer-Stäbe

Elastomer-staffs

Jets d'élastomère



SN2675-

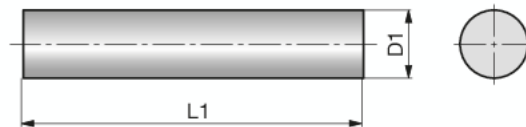
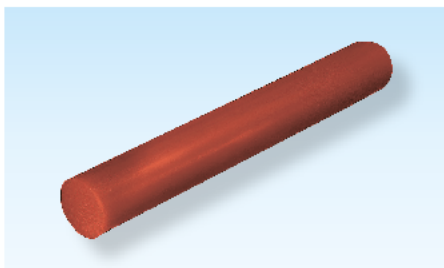
Mat.: PUR
90 ±5 Shore A



SN2675-D1-L1



| D1 | L1 | D2 |
|-----|-----|------|
| 16 | 300 | 6,5 |
| 20 | 300 | 8,5 |
| 25 | 300 | 10,5 |
| 32 | 300 | 13,5 |
| 40 | 300 | 13,5 |
| 50 | 400 | 17,0 |
| 63 | 400 | 17,0 |
| 80 | 400 | 21,0 |
| 100 | 300 | 21,0 |
| 125 | 300 | 27,0 |



SN2685-

Mat.: PUR
90 ±5 Shore A



SN2685-D1-L1



| D1 | L1 |
|-----|-----|
| 16 | 300 |
| 20 | 300 |
| 25 | 300 |
| 32 | 300 |
| 40 | 300 |
| 50 | 400 |
| 63 | 400 |
| 80 | 400 |
| 100 | 300 |
| 125 | 300 |