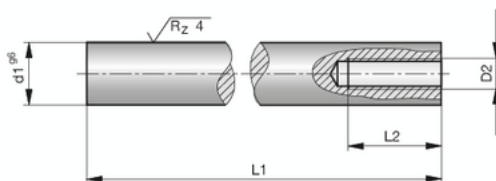


Schrägsäulen

Angle pins

Doigtes incliné

1



Z4090-

Mat.: 1.7131
58+4HRC

d1	L1	L2	D2
10	180	15	M5
12	210	18	M6
16	250	22	M8



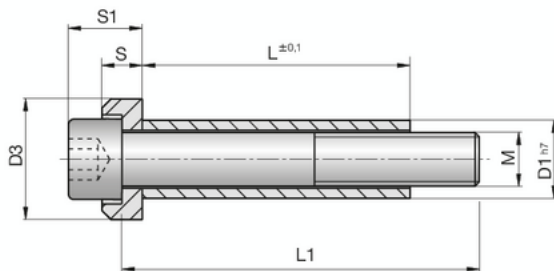
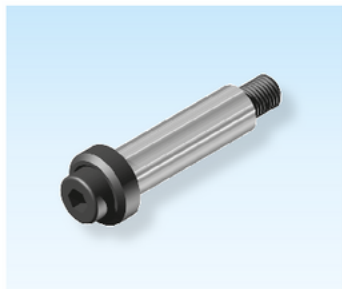
Z4090-d1



Schrauben mit Distanzrohr

Ground spacer sleeve shoulder screws

Vis avec entretoise rectifiée



SN1515-

Mat.: ST 12.9

D1	M	L																D3	S	S1		
		20	25	30	35	40	45	50	55	60	70	80	90	100	110	120	140				150	160
10	M6																			15	5,5	10
		L1 = 35	40	45	50	55	60	65	70	80	90	100	110									
12,5	M8																			19	6,5	13
		L1 = 35	40	45	50	55	60	65	70	80	90	100	110	120								
15	M10																			23	7,5	15
		L1 = 50	55	60	65	70	75	80	90	100	110	120	140									
17,5	M12																			27	9,0	18
		L1 = 50	60	65	70	80	90	100	110	120	130	140	150	180								
23	M16																			34	11,0	24
		L1 = 80								90	100	110	120	130	140	150	180	180	200			
25	M16																			40	11,0	24
		L1 = 80								90	100	110	120	130	140	150	180	180	200			



SN1515-D1-M-L

