

NORMALIEN **REPORT**

Edition 42 / 2018

Informative · Interesting · Innovative
The company magazine of STRACK NORMA

NEW TEST HALL FOR MANIFOLD PLATES

STRACK NORMA certified for inhouse-pressure tests.

BAKING WITH STRACK

Use of part conveyors
at Kaiser Baking Pans

NEW WEBSHOP

Shop online now
even easier

ANNIVERSARY PRODUCT

Product expansion
at latch locks

STRACK®

N O R M A L I E N

CONTENTS

- 4**
**PRESSURE EQUIPMENT:
ENSURE SAFETY**
- 6**
**PUNCH-BENDING-
WASTE:
EASILY REMOVED**
- 8**
**KÜHNE + NAGEL:
COOPERATION ON A
SUCCESSFUL COURSE**
- 9**
**POWERMAX® 2.0:
FOR TIGHT SPACE
CONCEPTS**
- 10**
**CONSTRUCTION
TIP: THE NEW AL-
TERNATIVE Z4-23**
- 12**
**PRODUCTS 2018:
FOR INCREASED
EFFICIENCY**
- 14**
**REQUEST NOW:
STANDARD PART
CATALOGUE 2018**
- 15**
**WEBSHOP:
CUSTOMER-ORIENT-
ED OPTIMIZED**
- 16**
**THINK. TECH.
STRACK.
CHARACTERIZES US**
- 17**
**FAIR-TRADE APPEAR-
ANCES: PRESENTING
AND ADVISING**
- 18**
**FOREIGN MARKETS:
STRACK EXTENDS
PRESENCE**
- 19**
**KEY ACCOUNTER:
BE ON THE TRACK
FOR STRACK**
- 20**
**WE INVITE
FORMLY AND
FESTIVELY**
- 21**
**OFF TO THE
FINISH LINE:
SPARKLING RUN**
- 22**
**PARTY AROUND THE
BALL: FOOTBALL COM-
PETITION / WORLD CUP**



EDITORIAL



DEAR READERS,

we are now approaching with great steps to the end of the year which has been successful and positive in many respects.

At our location Lüdenscheid we have been the first company in the industry to put a test hall for composite- and manifold plates into operation. This is how we guarantee even more safety for pressure equipment.

After we had redesigned the complete homepage last year, in 2018 the "heart" of our Internet presence followed: the webshop. Our customers can now order even more easier online thanks to the more user-friendly navigation and additional functions.

With the expansion of our representations in Asia and Central America we are increasingly meeting the growing demand in other key markets. In the focus is particularly the patented cam series

PowerMax®, developed for the worldwide use in the large-scale tooling, especially for the automotive industry.

You are welcome to read in our current Normalien Report about this and other news from our company and our product developments to increase efficiency.

Enjoy your reading!

A handwritten signature in blue ink that reads "Michael Lang". The signature is fluid and stylized, with a long horizontal stroke at the end.

Michael Lang
Managing Director



PRESSURE EQUIPMENT: ENSURE SAFETY



STRACK NORMA goes beyond the legal regulations in the safety tests of pressure equipment.

In the toolmaking gas springs allow great spring forces over long spring paths. The high pressures with which they work, however, burden the material, reduce their service life and constitute safety risks.

Gerd Roggatz is product manager for manifold plates at STRACK NORMA and head of our new company-owned Safety Test Centre for pressure equipment. In the interview he explains how we are improving the service life of pressure equipment and how we are minimizing security risks.

Editor: Why is the life expectancy so low especially for devices with gas springs?

Gerd Roggatz: The compact design of many pressure devices provides for a high compression rate and thus for the loading of the compression springs which significantly reduces the life expectancy. Especially in the increasingly used servo press technology autarkic

gas springs quickly reach their performance limits. Due to manufacturing tolerances of the individual gas springs these are subjected to different pressure losses. The consequence is that the tool plates are no longer moving parallel to each other. Parts of incorrect dimensions or possible tool damages are the result.

Editor: What possibilities are there to compensate these technical weak points?

Gerd Roggatz: So far, there has been the possibility to connect gas springs with hoses to each other. This eliminates the problem of the non-parallelism of the tool movements but in return the number of the interfaces which have to be sealed increases massively. Due to the pulsating hoses, these are exposed to a permanent movement and can lead to leakage problems. Thus, STRACK NORMA, has developed special manifold plates which master these challenges.

Editor: How exactly do the manifold plates work?

Gerd Roggatz: Our manifold plates work with a flat pressure increase, which puts less stress on the manifold plate springs. This significantly increases their service life. The manifold-plate gas springs are screwed directly in the tool- or machine plate and are connected to each other inside the manifold plate by bores. In this way we avoid additional interfaces to be sealed and the gas springs are still working in parallel.

In addition, we manufacture all sealing- and guide elements of our manifold plates from the most modern materials to meet the requirements over an as long period as possible. Furthermore, the manifold plate springs can be relubricated at any time to obtain ideal sliding surfaces for the seals.

Editor: Working with high pressures does not only place high demands on the materials. How does STRACK



Manifold plates of STRACK NORMA allow a longer service life of the gas springs.

NORMA ensure the safety of the pressure equipment?

Gerd Roggatz: We were the first company in the industry to set up a company-own, separate test hall in which we are testing our pressure equipment. The Pressure Equipment Directive 2014/68/EU stipulates a physical pressure test for all pressure equipment subjected to CE requirements. At STRACK NORMA, we even go beyond the legal requirements and test all pressure equipment in the new test centre, including those which are not CE-obligatory. This enables us to guarantee the highest level of safety. With an area of 12 x 6,50 metres and a height of 7 metres, the hall is designed to accommodate all tool sizes, so that we can also test large-format tools. We test the pressure equipment by means of low viscosity oil. The complete devices must withstand a test pressure of several 100 bar. With the installation of the new test hall, we are expanding our comprehensive customer service concept. In addition

to the comprehensive safety tests, we also support our customers at the initial operation on site and later we carry out subsequent repeat tests.



Since June STRACK NORMA tests pressure equipment inhouse in the new test hall.

RELIABLE, VERSATILE USE AND SAFE

Our manifold plates are

- Innovative and powerful
- Safe and durable
- Efficiency increasing and nevertheless easily adjustable
- Complying with the law at home and abroad

Are you interested? Then simply contact Mr. Gerd Roggatz, our project manager for manifold plates:

Mail g.roggatz@strack.de

Tel +49 2351 8701-526

or inform yourself at the fair

EuroBlech from 23 to 26 October in Hannover at booth H11, hall 27.

Gerd Roggatz, product manager manifold plates at STRACK NORMA and head of the test centre for manifold plates, answered our questions.

PUNCH-BENDING-WASTE: EASILY TRANSPORTED



Picture: Fotolia

Kaiser and delicious cakes – both are inseparately connected.

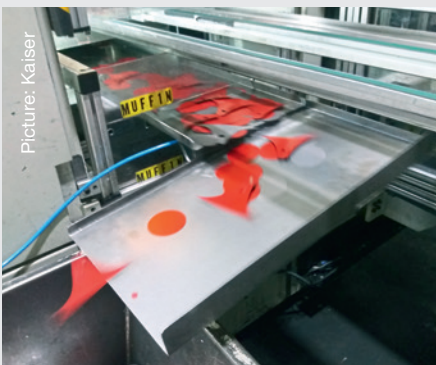
It smells well in the kitchen, when a delicious cake is in the oven. Heart-shaped, angled, round – in order that the cake looks like this, the baker places the pastry in a baking pan. Kaiser produces baking pans made in Germany in Diez. The WMF-subsi-dary relies on part conveyors of STRACK NORMA during the handling of the punch waste.

There are things which simply belong together. These include certainly the cakes and baking pans of W.F. Kaiser u. Co. GmbH. The numerous baking utensils of Kaiser are today indispensable components of innumerable kitchens.

References, text and picture: Frauke Finus; Vogel Communications Group; blechnet

KAISER USES PART CONVEYORS FROM STRACK

When Wilhelm Ferdinand Kaiser founded a wholesale trade for metal products in 1919 in the Erzgebirge, this was the beginning of the ascent from a small company to the market leader for baking pans and baking accessories. After the Second World War, when the company was thrown back to zero, it expanded quickly. In 1978 the site was moved to Diez/Lahn, where still today the main office is located.



Picture: Kaiser

For the removal of good parts and scrap pieces from the plants, Kaiser uses several pneumatic part conveyors of Strack.

“The decisive growth engine was and is a fine feeling for the requirements of the customers. Products making the life easier meet the right nerve”, explains Frank Dillenberger, master in the tool-making at Kaiser in conversation with Blechnet. “In 1968, for example Kaiser launched non-stick-coating baking pans on the market as the first manufacturer. This was already a little revolution. In the year 2002 Kaiser was taken over by WMF and in the year 2005 it was clear at the Lahn to say yes to the location Germany. More than 4 million Euro were invested in the expansion of the production plant in Diez to meet the challenges of the future – and these halls are impressive: proper labels in all places and objects, large information walls for the employees which create transparency and everywhere references to occupational safety can be seen there. Kaiser produces quality made in Germany. The baking pans are manufactured from the coil, which is delivered in Dietz already

coated. The vertical range of manufacture of the company becomes particularly clear, if you look, in addition to the classic presses, at a good part of the other production plants – these are self-developed, designed and built.

Standard parts in the toolmaking save time and work

Kaiser processes sheets in the thickness of 0.28 to 0.75 mm with about 100 employees at the location. It is bent, rolled, punched, riveted and the cookie cutters for the Christmas cookies are additionally welded. In the own tool-making Dillenberger and his team build and maintain the necessary tools. “When the people are going well, they bake, but when people do not go well, they bake too”, the master of the tool-making explains the nature of the end customer. Thus, it is not surprising that in Diez the production runs in three shift operations.



Frank Dillenberger (middle, Kaiser) and Thomas Bank (right, STRACK NORMA) show the production of baking pans to Blechnet editor Franunke Finus.

SPACE SAVING AND RESISTANT

For the toolmaking Kaiser relies on standard parts, this saves time and work. The standard part specialist STRACK NORMA supplies the company for example with guiding elements, gas springs and partly also with special cutting punches. “The guide bushes are available at STRACK in three guide play classes. They are exactly aligned with the guide pillars. This is ideal for our requirements”, praises Dillenberger, who has maintained a very good contact to the STRACK sales representative Thomas Bank for years. “We offer our customers an easy possibility with our newly-designed webshop to select their standard parts. In addition, many useful technology tips are deposited here”, explains Bank.

Part conveyors only require little space at the press table

For the removal of good parts and scrap pieces Kaiser uses several part conveyors of STRACK. “Before changing

to the part conveyors, we had installed conveyor belts here. But they often stood still either due to defects or the belts were worn out some day, because the waste produced by us is quite sharp-edged”, explains Dillenberger the change to the offer of STRACK. “Another advantage”, adds Bank “is that the part conveyors can also act up to 80° inclined uphill”. Moreover, the space in the punching tool is precious. The linear conveyors of STRACK are not built up very high and take accordingly little space in and around the press.

The linear conveyors operate according to the principle of speed difference due to different surface friction values. There, different front- and back acceleration values are used to transport parts or punching waste on a sheet groove. The possibility to set the stroke frequency allows the transport speed to adapt to the local circumstances. “The devices are designed for a pressure of 3.9 to 4.7 bar



The pneumatic part conveyors of STRACK are available in four dimensions.

and available in 4 types. The part conveyors work with a stroke frequency between 10 and 180 strokes per minute and a noise level of maximal 70 dB(A)”, explains Bank. Also, the flexibility of the part conveyors is an argument for Dillenberger. “We can attach the part conveyors optionally to each press, dismount it again and exchange them among each other and thus can use them precisely where we just need them. In addition, all components of the part conveyors are available as spare parts. Thus, a clearly long future is guaranteed for them here with us in Diez”.

KÜHNE + NAGEL: COOPERATION ON A SUCCESSFUL COURSE



Handover of the new trailer: Volker Alms, logistics manager of STRACK NORMA, Jessica Carneiro of Kühne + Nagel, Andreas Geyer, shareholder of STRACK NORMA and Carsten Schmidt of Kühne + Nagel are happy about the successful cooperation (from left).

NEW TRAILER GERMANY-WIDE ON TOUR

Long-term cooperations with suppliers are essential for the success of STRACK NORMA. Even shorter delivery times, continuous consignment tracking and ready for deliveries at any time – that's what the customers of today are expecting.

In cooperation with the transport company Kühne + Nagel we were able to successfully increase our delivery performance at home and abroad.

Founded in 1890 in Bremen Kühne + Nagel with more than 1,300 branches in more than 100 countries and about 7.000 specialized employees is one of the most successful companies of the logistics industry.

Due to the positive development, the partnership, that has already been in existence since the beginning of 2016 was extended with long-term contracts for the next three years. This is also reflected in the new trailer units which have been in use with our logo Germany-wide since May 2018.



PowerMax[®] 2.0 FOR TIGHT SPACE CONDITIONS

SAVES SPACE, RUNS PRECISELY, WORKS EFFICIENTLY

2015 STRACK NORMA developed an up to 30 percent shorter standard cam especially for narrow space concepts with the PowerMax[®] cam 2.0. It combines attitudes such as high running precision, strong press- and retraction forces and tight tolerance values in one product.

Already the PowerMax[®] cams of the first generation characterized by their more compact installation depth compared to other standard cams on the market. The sale of more than 400 cams and satisfied customers have already by far exceeded our expectations in the introduction phase.

The requirements of the today's tool-making

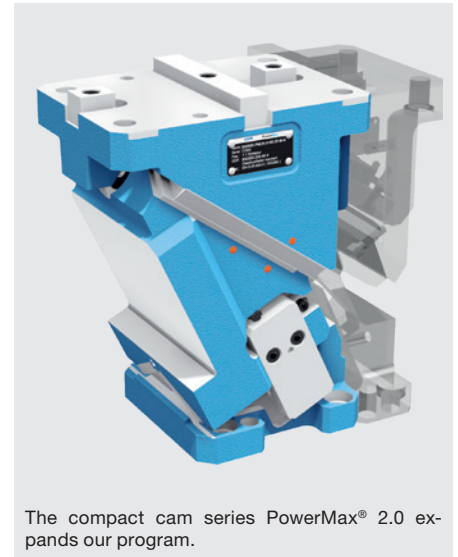
In future tools still need to become more

compact and smaller to meet the requirements of a small installation space. To be able to produce cost-effective the companies increasingly save space and reduce the tool stages in the manufacturing process. The PowerMax[®] cam 2.0 can also be used in these conditions with high running accuracy and this forms the basis for an efficient and safe working.

STRACK NORMA extends its standard program

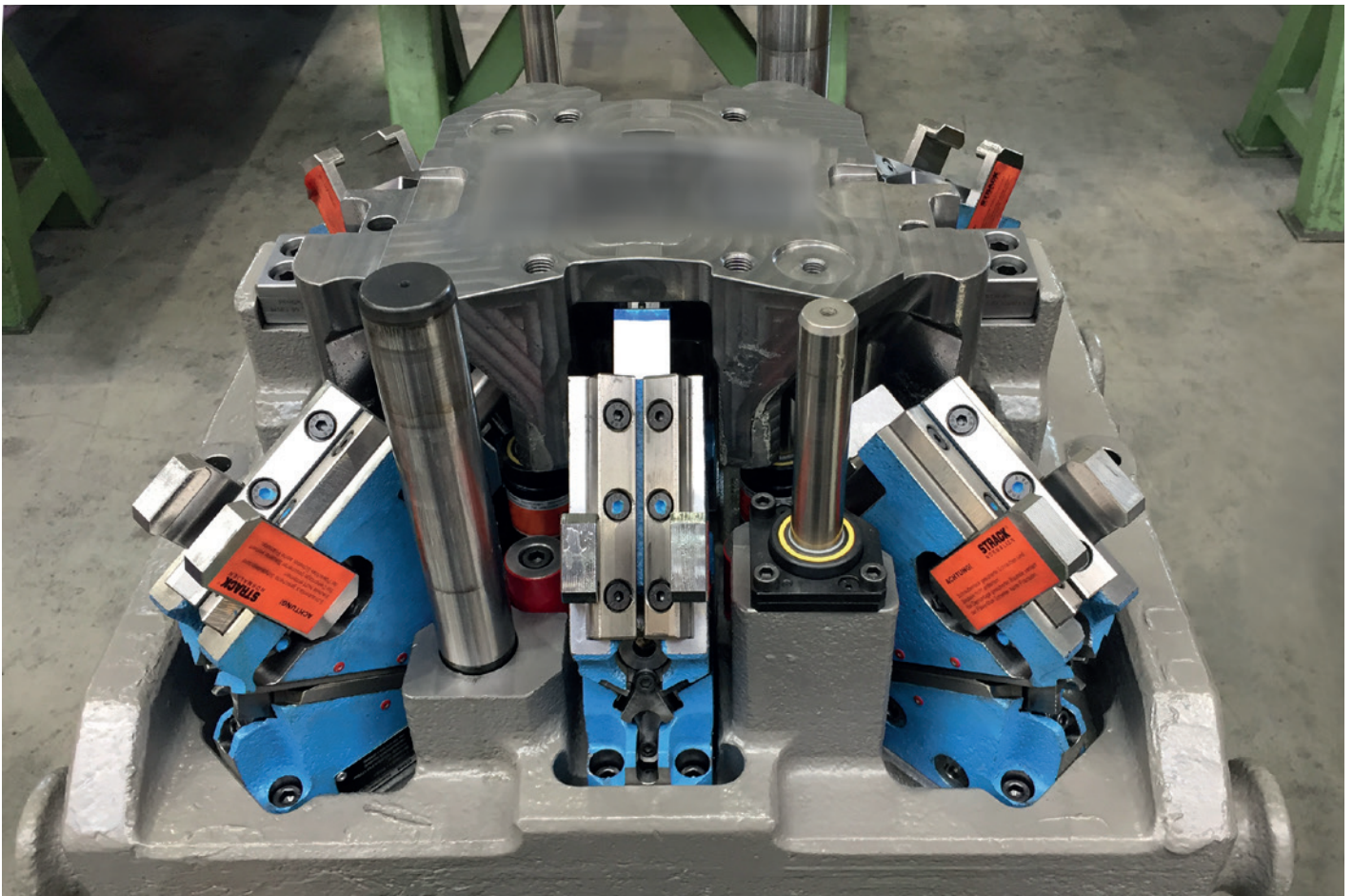
After we initially only used the popular widths 65, 90, 125 and 165 mm in the Medium-Version, we now extended our standard program to adapt it to the market requirements. Particularly special solutions such as cams with 700 mm width show the significance of our individual consultations, in which we are

developing future-oriented concepts in close cooperation with the customer.

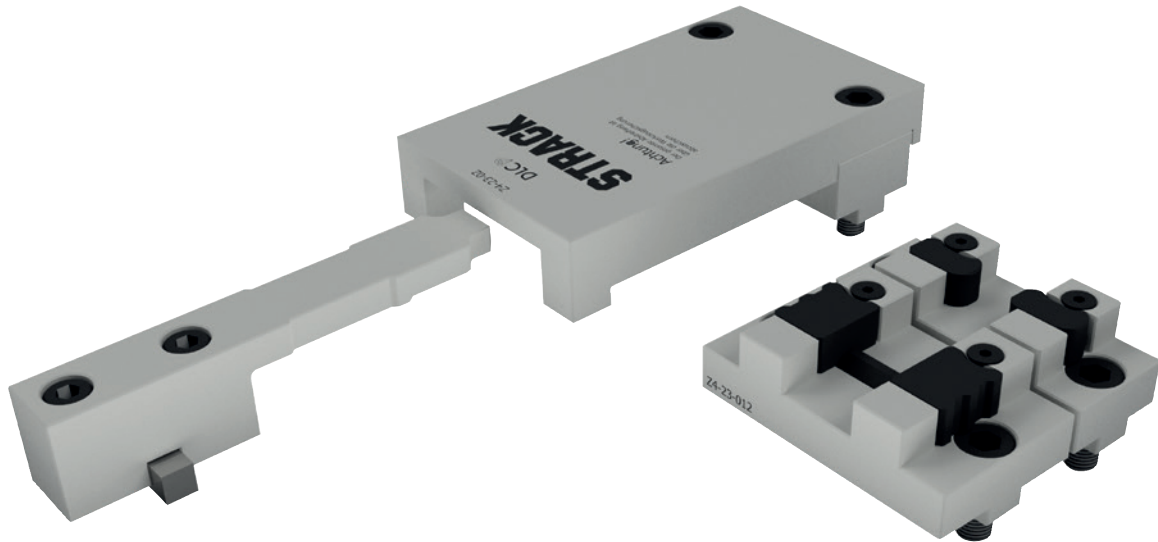


The compact cam series PowerMax[®] 2.0 expands our program.

Compact, powerful, efficient and safe – the PowerMax[®] 2.0 helps to master the challenges in the market.



CONSTRUCTION TIP: THE NEW ALTERNATIVE Z4-23



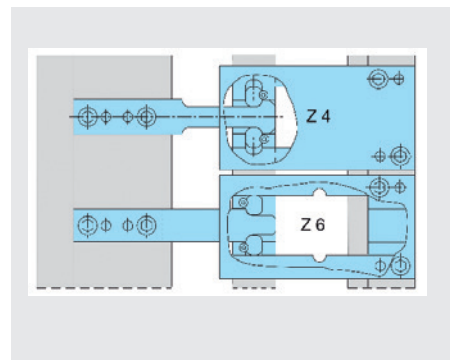
The newly developed latch lock Z4-23 is particularly suited for small strokes, which have been combined up to now by Z4 and Z6 in one latch lock. Z4-23 only requires three instead of 7 mm minimum stroke for itself.

OUR CUSTOMERS CHALLENGE US EVERY DAY “AGAIN”

STRACK NORMA has always worked according to the motto “from the practice to the practice”, because the best ideas are arising from the market requirements. One example is the success story of the globally used latch lock.

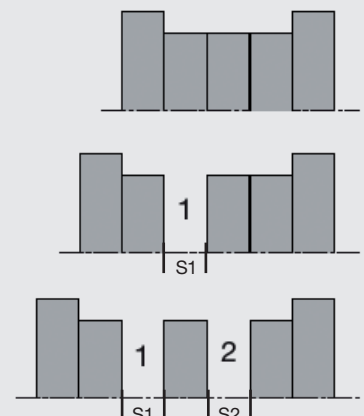
Introduced onto the market in 1976, STRACK is continuously developing the latch lock even further today: new challenges required customized and perfected solutions. In 1979 we presented the catch latch lock Z4 as a further development of the rake latch lock Z5. In order to increase the production safety, the formerly only easily drawn and unsecured plate now locks in a defined position. Also, for fast-running tools the latch locks of the series Z4 are excellently suited: because now only small masses are moved, they allow a quick opening and closing of the mould.

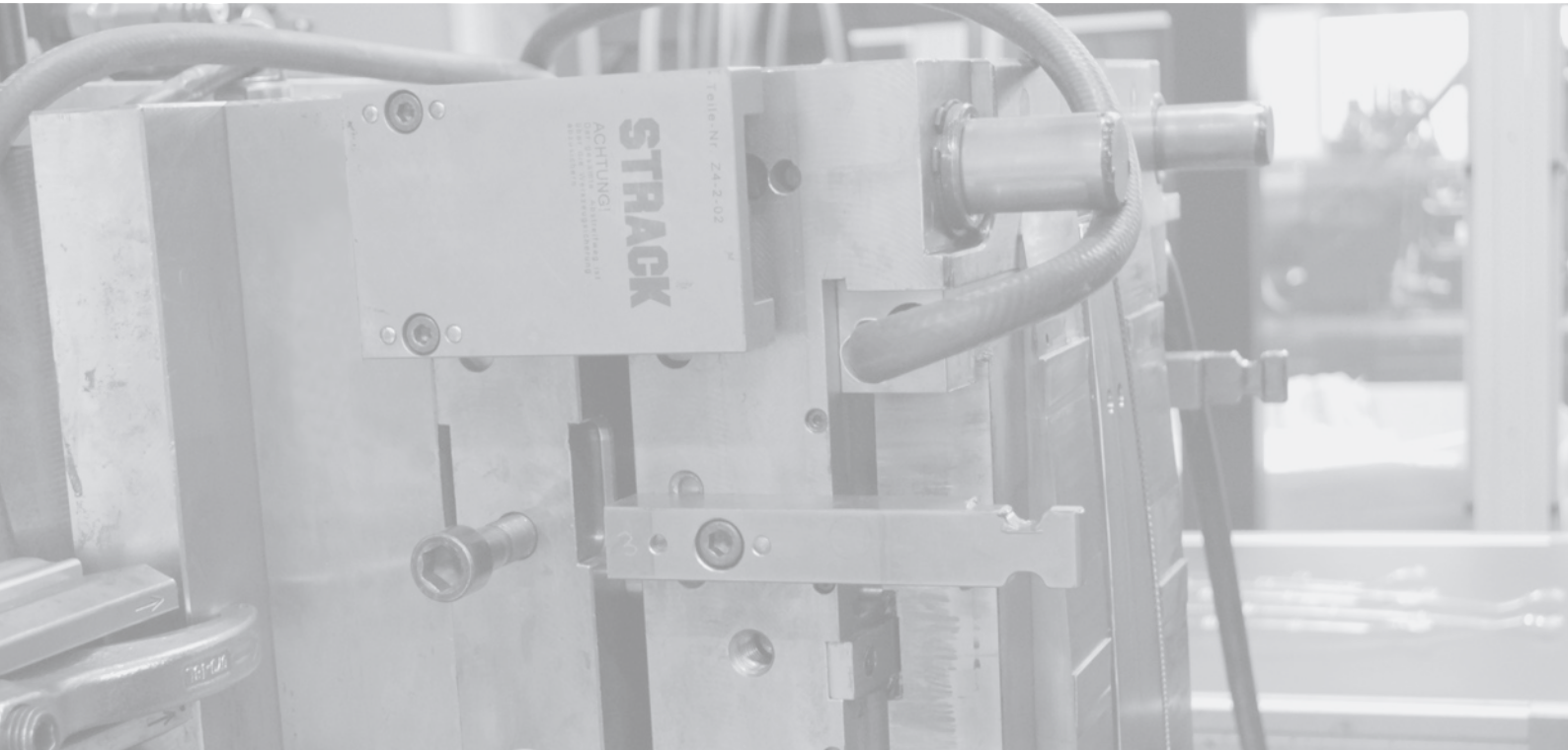
With the extended possibilities of the lack lock series Z4 we met the requirement to realize different ways with different parting planes, to meet the demand of delayed drawing of the mould plates after a certain sequence of motion and the demand for locking functions and early returns.



Z4 AND Z6 WELL COMBINED

It is not rare that different functions such as the delay of a Z4 and a further push lock Z6 in one sequence of motion are combined. Such practicable solutions often make the leap to the standard – a success for the development team of STRACK NORMA, which always works out the best solution for the customer.





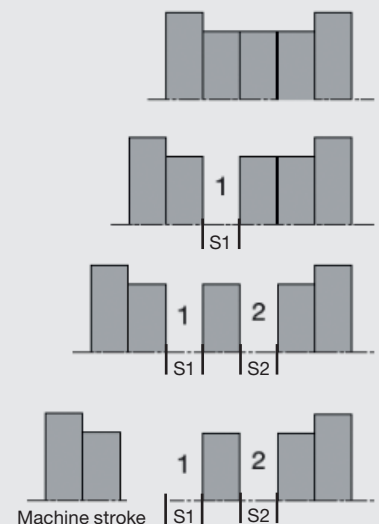
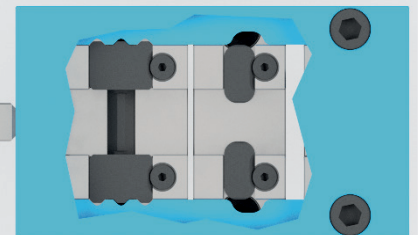
Injection moulding tool with latch lock: in new variants and intelligently combined the successful classic supports our customers to meet their challenges worldwide.

In moulding tools cooling- and hydraulic connections, mould slides and limit switches at the mould plate find space in extremely confined conditions to realize highly complex functions. Due to the fact that the circulating free space is limited, often space-saving solutions are searched for. The new development Z4-23, particularly meets these requirements for small strokes, at which the function of Z4 and Z6 are combined in one latch lock. While the previously used catches of the latch lock size Z4-21/22 still required seven millimeters, the reworked catch geometry reduces the stroke S2 to three millimeters. The space required per side is reduced from 180 mm to 90 mm width of the control plates when combining Z4 and Z6.

Z4-23 OFFERS MORE SPACE



The latch lock operates in such a way that the main parting plane (1) opens by a way S1, while the second parting plane (2) is locked with the way (2) by the positive locking push lock function. As soon as the opening path S1 has been driven, the push lock function releases the second plane (2). The latch-locks Z4-23 now pulls the mould plate by a minimal stroke S2 of only 3 millimetres to open the second parting plane. After the driven opening stroke, the mould plate is locked, and the main parting plane can open completely. The closing procedure is in reverse order.

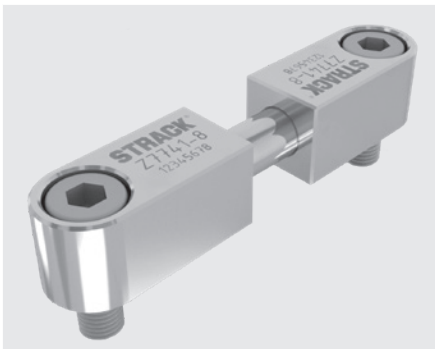


PRODUCTS 2018: FOR INCREASED EFFICIENCY

SAFELY BRIDGED

Variable, versatile and resistant: the deflection element Z7741 safely bridges a cooling bore distance of 30 to 500 millimetres.

With the new deflection element Z7741 STRACK NORMA has developed a compact and stable system to connect cooling holes with each other. So, cooling channels can also be deflected from the outside via several mould plates. We offer the deflection element with a channel diameter of 8 mm and in three lengths. In this way it variably bridges a cooling bore distance of 30 to 500 millimetres and allows an especially high flexibility in the construction. The deflection element Z7741 is made of stainless steel and can thus also be used with aggressive cooling media such as light acids without corroding. The used sealings consist of robust and temperature-resistant Viton (Fluorelastomer FKM).



The deflection element Z7741 connects cooling holes variably and withstands aggressive cooling media.

REGULATED DIRECT- LY ON THE DEVICE

The flowmeter Z7703 allows control, regulation and shutoff of cooling circuits directly at the tool.

With the new flowmeter Z7703, STRACK NORMA has introduced an allrounder to the market. It controls and regulates the flow in the individual cooling circuits of injection moulding tools directly at the tool on a well visible scale and can also shut off the flow. The flowmeter is particularly suited for the checking of the flow in fine cooling circuits, such as for laser-sintered mould inserts or for cooling bores with a small diameter. Ideally it is used in connection with the tempering control filter Z7700.

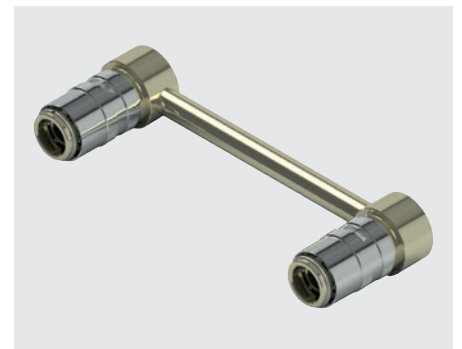


The flowmeter is a real allrounder.

OPTIMALLY SOLVED

New couplings extend the cooling water program and allow an optimal and efficient temperature control of injection moulds.

In addition to the proven connection couplings and -nipples for temperature control circuits the users are now provided with adapter couplings, blind couplings, quick couplings with external threads and deflection couplings. All threads are coated with sealing agents and thus self-sealing.



New couplings allow optimal and efficient temperature control of injection moulds.



The adapter coupling Z7704 with connecting nipples has proven itself for temperature control circuits.

HIGH-PRECISELY GUIDED

The angular centering unit Z55 can be flexibly positioned in the tool and provides for an improved part quality.

The new angular centering unit Z55 of STRACK NORMA allows an improved part quality because its four-corner radii permit an insertion in the tool and thus a precise positioning.

The centering unit Z55 can be introduced over the center axis in the tool like the other centering units in the program of the standard part producer. Thus, it compensates different thermal expansions in the both mould halves which could otherwise cause that the mould halves seize up. Z55 is available in 5 dimensions from 20 to 50 mm for different mould sizes, so that it can optimally absorb the forces in each case and is DLC- coated (DLC – diamond-like carbon). This coating on the upper part increases the lifetime, improves the scratch- and wear resistance of the surface and reduces the maintenance costs by up to 80 percent.



The four-corner radii allow a particularly precise positioning.

SLIDES PROLONGATED

Respond more flexibly to customer needs – New extended slides for the proven slide units from stock.

Since 1994 the reliable round and square slide units Z4290, Z4294 and Z4296 have been in the program of STRACK. By means of slides lateral undercuts and breakthroughs are released inside and outside in the moulded part. In order to shorten the construction- and production time significantly, STRACK NORMA provides a complete range of standardized sliding elements.

From now on extended slides from 80 to 140 mm length are available for these slide units directly from stock. This enables the toolmaking to use the slides flexibly and directly in the tool. The slides are made of hot work steel 1.2343 hardened to 52 HRC and can be provided with the mould contour by the toolmaking.



STRACK NORMA extends slide range for more flexible solutions.

FINELY FILTERED

The tempering control filter is a specially developed oil- and water filter for small cooling holes and core coolings.

Due to its fine filter insert with 100 µ mesh width, the filter Z7700 removes finest dirt particles from the cooling circuit, which can otherwise lead to clogged cooling channels or early wear of sealing elements. This makes it ideal for applications with laser-sintered mould inserts and thin cooling water bores, as this actively prevents a contamination and the associated reduction of the flow. The cylindrical design has a largely dimensioned chamber for contaminations, so that long maintenance intervals are possible. The stainless-steel insert is washable and easy to clean.

The tempering control filter can easily be integrated in the cooling circuit, because on one side a plug nipple Z7712 and on the other side a coupling Z7709 are attached. There is also the possibility to use the ½ inch thread on both sides for the connection.

Thanks to the supplied fixing clamp, the filter can easily be mounted on the tool or the machine.



The large filter chamber allows long maintenance intervals.

REQUEST NOW: STANDARD PART CATALOGUE 2018



WEBSHOP: USER-ORIENTED OPTIMIZED

ADDED FUNCTIONS AND SIMPLIFIED ORDERING

In order to simplify online-orders for our customers, we have optimized our webshop. In addition to a generally more user-friendly navigation, the webshop has now a responsive display, so that it is optimally displayed on mobile devices. Moreover, we added functions increasing the usability.

- We have extended the order data form by the field “type of dispatch”, allowing users to select between standard- and different express deliveries.
- In the order and application data forms users can now enter up to five e-mail addresses as additional recipients in order to easily inform other people about the process in parallel with the processing.
- The shopping cart can now be exported as a PDF, so that possible orders can also be stored in a list before placing the order for later use or for approval.
- We have also made some adaptations in the goods selection area, which facilitate the product configuration and compilation.

Add switch accessories

The screenshot shows a grid interface for adding switch accessories. The grid has 5 rows and 5 columns. The first column contains product images with labels: Z7602-2, Z7603-2, Z7602, Z7603, Z7627, Z7628, Z7604, Z7624, Z7602-2, and Z7603-2. The second column contains a white cable. The third, fourth, and fifth columns are empty. The sixth column contains a gear icon. Blue arrows point from the product images in the first column to the gear icons in the sixth column.

The optimized webshop of STRACK NORMA offers advanced functions for even easier online orders.

You can reach our webshop at <https://www.strack.de/de/shop/>.

STRACK®
NORMALIEN

Enter a search term



English



Login



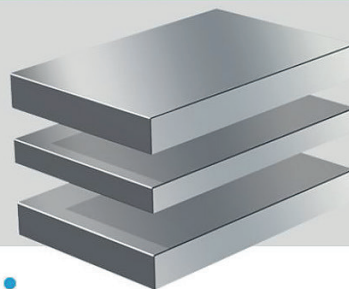
Shopping cart

[Home](#) [Shop](#) [Company](#) [Quality](#) [Download](#) [Contact](#)

Plate concept FLEXiLINE

Flexible in tolerances, outer dimensions and gauges for boreholes

[Read more...](#)



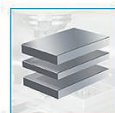
[Home](#) > [Shop](#)

0 (0)

Further parts in chapter

After selecting your product, you will find here further parts of the chapter

STRACK Shop



01. Plates



02. Moulds



03. Punching tools

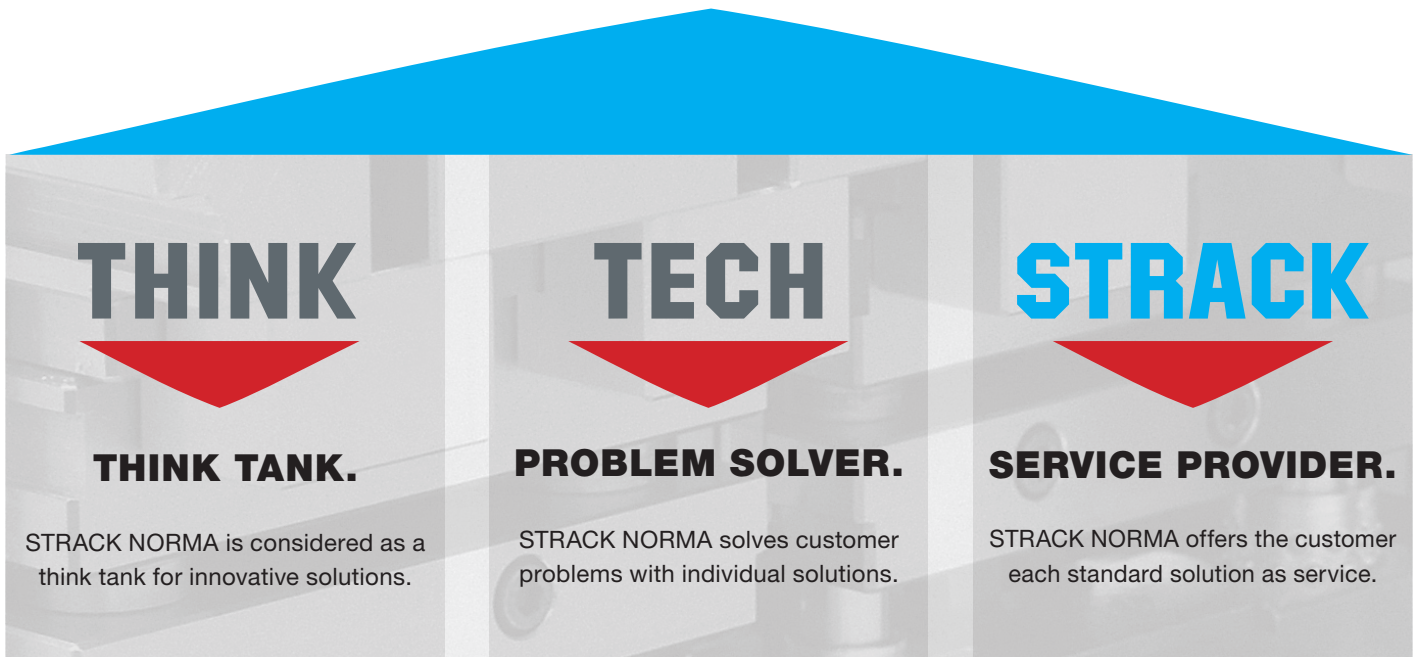


04. PowerMax cam units



THINK. TECH. STRACK. CHARACTERIZES US

We act according to the requirements of our customers as a think tank for innovations, as a problem solver of individual challenges or as a service provider for standard solutions. These three columns of our company characterize us in the market and with our new claim we want to make them clear.



Our claim THINK. TECH. STRACK. describes the three columns of STRACK NORMA and at the same time our unique selling point.

Innovation is very important in the company STRACK NORMA. The development of responses to previously unsolved challenges in the tool- and mould making is one of the main columns of the company.

THINK stands for these innovative developments for the tool- and mould making.

The application engineers of STRACK NORMA are available on site to assist the customer and are in constant dialogue with him to create solutions for his technical requirements. So, we develop future-oriented tools that are precisely tailored to the requirements of the customer.

TECH stands for these customer-specific special productions, product modifications and individual solutions.

STRACK NORMA offers a wide standard program for standard parts for the tool- and mould making consisting of 1.700 products in more than 170.000 dimensions and more than 30.000 shapes and 40.000 standard parts, 30.000 individual parts and more than 20.000 complete tools. With a worldwide distribution network with 15 German sales offices and 36 sales offices in a total of 45 countries on all continents we ensure the proximity to the customer and guarantee short delivery times.

For this stands STRACK – for us as a family-run standard part producer and our worldwide range of standard solutions.



Application technicians and -engineers at STRACK NORMA are constantly exchanging themselves to develop customer-oriented solutions.

TRADE-FAIR APPEARANCES: PRESENTING AND ADVISING



Several times a year, we are available for direct talks to our customers and business partners at trade fairs.

NETWORKING AND EXCHANGING

At the 10th punching technology congress in Dortmund in April, we met specialists from the production and development as well as managers in the field of the punching technology.

The approximately 240 congress visitors informed themselves in numerous specialist presentations and the accompanying exhibition, where we also presented ourselves with a booth about current topics in the punching technology. Each year the networking as well as the professional exchange are in the focus. The congress is organized by KIST Competence- and Innovation Centre for the Punching Technology Dortmund e.V.



Stefan Jussenhoven from the STRACK application technology (left) and sales representative Marc Oliver Pakirinus (middle) were available for technical discussions at the 10th punching technology congress in Dortmund.

STRANZTEC EXCEEDS EXPECTATIONS

For the first time, STRACK NORMA presented itself as an exhibitor on the trade fair Stanztec in Pforzheim in June.

STRACK NORMA was among the 151 exhibitors from 5 nations, which presented their innovations in the range of the punching technology on the international trade fair. "The trade fair was very well attended with about 3,400 trade visitors from 31 nations, so that we were able to have numerous technical discussions with potential business partners from abroad", Stefan Jussenhoven (STRACK NORMA) sums up the successful appearance on the fair Stanztec.



The team of STRACK NORMA, Stefan Jussenhoven and Marc Oliver Pakirinus welcome visitors on the trade fair Stanztec.

FOREIGN MARKETS: STRACK EXPANDS PRESENCE

MEXICO: SATISFY POWERMAX® DEMAND

Direct and competent advice on site: STRACK NORMA opened a new representation in Mexico and thus extended the presence in Central America under the direction of Marco Antonio Saucedo Dominguez.

In addition to the personal customer care on site, Marco Antonio Saucedo Dominguez supports us to satisfy the increasing demand particularly for the patented standard cam-series PowerMax®. We developed the PowerMax® cam for the worldwide application in the large-scale tooling, especially for the automotive industry. It thus falls in the field of the new representation director, who has a long-term experience in the range of large-scale tooling. The premium product meets highest requirements in terms of compactness, lifetime and performance and is used for example by the Volkswagen Group.



The director of the new STRACK representation in Mexico, Marco Antonio Saucedo Dominguez, offers from now on customer care on site.

CHINA: EXPAND KEY MARKET ASIA

Under the leadership of Nicole Shum STRACK NORMA opens a representation in Dongguang, China, and takes another step in its planned long-term expansion of the market Asia.

Nicole Shum, who has been representing our first representation in Asia, STRACK HK (Hongkong) since 2015, is now available in Dongguang for our customers as a competent and qualified contact person. In our new office we distribute standard parts for the tool- and mould making and for this it is equipped them with a warehouse and a measuring area. With the new subsidiary STRACK NORMA enlarges its service offer, so that the customers can expect quick and competent support for all questions and challenges on site.



Nicole Shum is a competent and qualified contact person on site for our customers in Dongguang.



KEY ACCOUNTER: ON TRACK FOR STRACK

EMPLOYEES IN NEW POSITIONS



GIUSEPPE NUOVO

Since the beginning of the year Giuseppe Nuovo reinforces the team of the key accounters. Previously working as a plant manager, he is now responsible for the sale in Germany, in the region of Saxony and contact person for Mexico, Brazil, Italy, Austria and Turkey. He has been knowing our products for years and can provide competent support in the range of the standard cam series PowerMax®, the manifold plates and sintered-metal-strips.



KLAUS FILTHAUT

The key accountant Klaus Filthaut has been active in the area of Berlin and Brandenburg and environment since the beginning of the year. Particularly in the field of latch locks and hot runner systems, but also in all questions around STRACK mould- and punch standard parts he is the contact person for our customers of both Federal States.



ROBERTO SIKORA

Roberto Sikora has changed within the company in the field of the key account management. Since September the skilled toolmaker for punching- and forming technology and mechanical engineering and business technician has been responsible for this field. In addition to the area of Northern Germany he looks after our customers in Portugal, Sweden, France, South Africa and America.

STRACK CON- GRATULATES!

We congratulate and we want to thank our employees belonging to the STRACK family for many years.

MANY THANKS & CONGRATU- LATIONS!

10 YEARS

JÜRGEN KRUGMANN

Entrance: 1st January 2008

DIETMAR KAMMERER

Entrance: 1st July 2008

STEFAN JUSSENHOVEN

Entrance: 15th August 2008

DENNIS HELLWIG

Entrance: 1st September 2008

WE INVITE: FORMALLY AND FESTIVELY

MEETING: EUROPEAN REPRESENTATIONS INFORMED

At the beginning of April the castle “Burg Schnellenberg” in Attendorn was completely dominated by standard parts: for, in the past two days we invited our European representations to the castle for a meeting.

The STRACK employees presented their partners among other things own innovations and concepts. In the evening the castle was explored together and in a relaxed get-together experiences were exchanged.



PARKING DECK PARTY: BEST BURGERS OF LÜDENSCHIED



Also, this year we celebrated last Saturday together with our employees our company party on the STRACK parking deck.

In beautiful weather and with good entertainment by the cover-band Lina Marrocco we spent a nice afternoon with our families enjoying delicious home-made burgers and cold drinks.



OFF TO THE FINISH LINE: SPARKLING RUN

At the end of June 2018 it was time: the total city of Lüdenscheid was dominated by “running and walking” for the working atmosphere. Also, this year, we started with 50 runners and walkers at the 16th AOK company run. Together with nearly 6,000 participants we spent a common sporty evening in good weather at summer temperatures.



PARTY AROUND THE BALL: FOOTBALL COMPETITION AND BEGINNING OF THE WORLD CUP



IMPRINT

**PUBLISHER &
EDITOR**

**STRACK NORMA
GmbH & Co. KG**

Königsberger Str. 11
D-58511 Lüdenscheid
P.O. Box 16 29

Tel + 49 2351 8701-0

Fax + 49 2351 8701-100

Mail info@strack.de

Web www.strack.de



STRACK®

NORMALIEN

STRACK®

NORMALIEN

STRACK NORMA GmbH & Co. KG

Königsberger Str. 11
D-58511 Lüdenscheid
Postfach 16 29

Tel + 49 2351 8701-0
Fax + 49 2351 8701-100
Mail info@strack.de
Web www.strack.de



Management
System
ISO 9001:2015

www.tuv.com
ID 0910092006