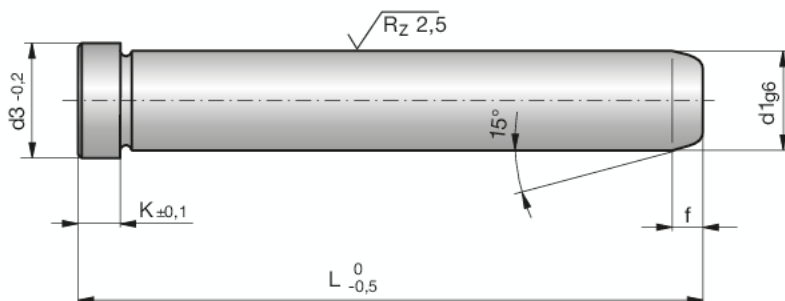


Führungssäulen

Guide pillars

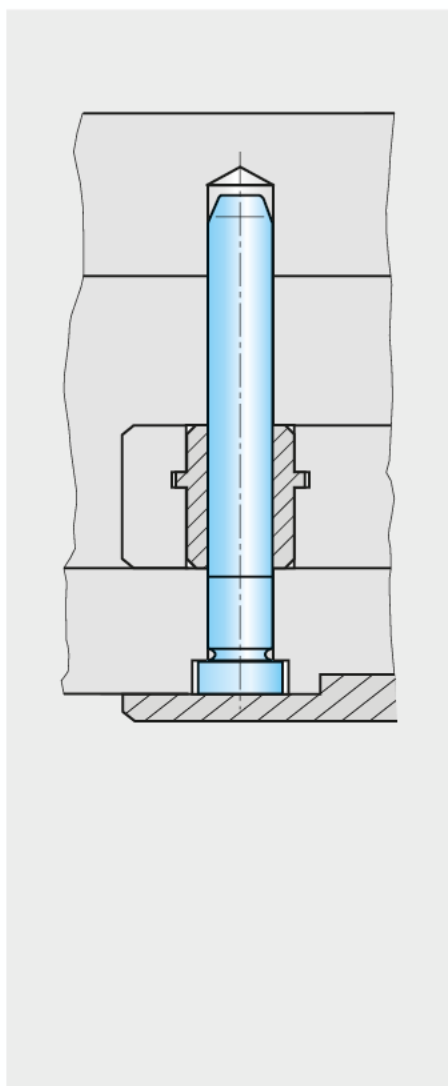
Colonnes de guidage



Z65-

Mat.: 1.7131
58+4HRC

Z65-d1-L



d1	L	d3	K	f	d1	L	d3	K	f	
10	60	12	6	3,5	20	80	24	8	5,0	
	80	12	6	3,5		100	24	8	5,0	
	90	12	6	3,5		120	24	8	5,0	
12	60	16	6	3,5	24	140	24	8	5,0	
	80	16	6	3,5		160	24	8	5,0	
	90	16	6	3,5		180	24	8	5,0	
	100	16	6	3,5		200	24	8	5,0	
	120	16	6	3,5		220	24	8	5,0	
14	140	16	6	3,5	28	100	28	15	5,0	
	60	18	8	4,0		120	28	15	5,0	
	80	18	8	4,0		140	28	15	5,0	
	100	18	8	4,0		160	28	15	5,0	
	120	18	8	4,0		180	28	15	5,0	
	140	18	8	4,0		200	28	15	5,0	
16	160	18	8	4,0	32	220	28	15	5,0	
	180	18	8	4,0		240	28	15	5,0	
	280	28	15	5,0		280	28	15	5,0	
	60	20	8	4,0		32	100	32	15	5,0
	80	20	8	4,0			120	32	15	5,0
	100	20	8	4,0			140	32	15	5,0
120	20	8	4,0	160	32		15	5,0		
140	20	8	4,0	180	32		15	5,0		
160	20	8	4,0	200	32		15	5,0		
18	180	20	8	4,0	32	220	32	15	5,0	
	60	22	8	4,0		240	32	15	5,0	
	80	22	8	4,0		280	32	15	5,0	
	100	22	8	4,0		32	160	36	15	6,0
	120	22	8	4,0			200	36	15	6,0
	140	22	8	4,0			250	36	15	6,0
160	22	8	4,0	300	36		15	6,0		
180	22	8	4,0							