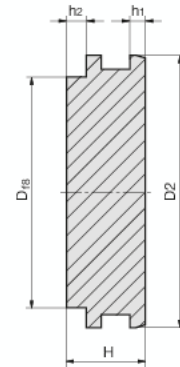
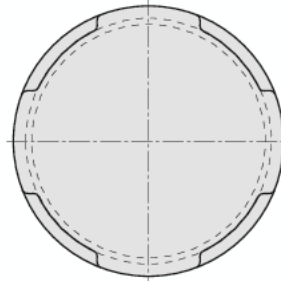
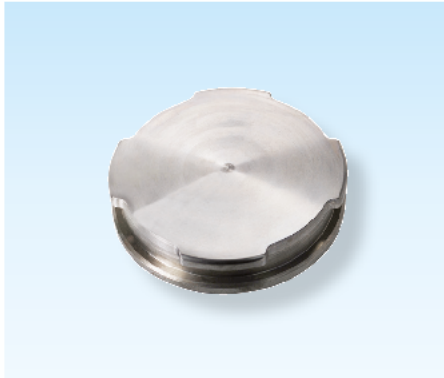


## Zentrierflansche

## Centering adaptors


## Rondelles de centrage

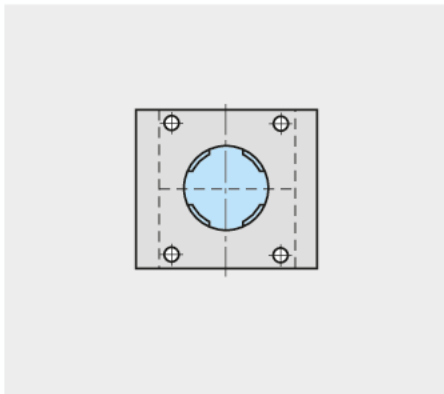


2

**Z8077-**

Mat.: ST

 Z8077-D2-h2



D2	h2	h1	H	D
60	3,5	6	21,5	50
100	3,5	6	26,5	90
100	9,0	6	32,0	90
100	11,0	6	34,0	90
110	3,5	6	26,5	90
110	9,0	6	32,0	90
110	11,0	6	34,0	90
125	3,5	8	28,5	90
125	9,0	8	34,0	90
125	11,0	8	36,0	90
160	3,5	15	40,5	90
160	9,0	15	46,0	90
160	11,0	15	48,0	90