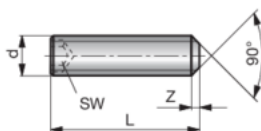
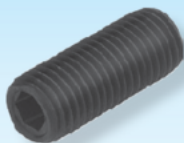


## Stiftschrauben

## Locking screws

## Vis de blocage

2



**SN3600-**

ISO 4026-45H  
DIN 913-35H



SN3600-d-L



d	L	Z	SW	d	L	Z	SW
M4	8	0,70	2,0	M10	16	1,5	5,0
	12	0,70	2,0		20	1,5	5,0
M5	8	0,75	2,5		40	1,5	5,0
	12	0,75	2,5	M12	16	2,0	6,0
	16	0,75	2,5		25	2,0	6,0
M6	8	1,00	3,0		30	2,0	6,0
	12	1,00	3,0	35	2,0	6,0	
	16	1,00	3,0	40	2,0	6,0	
	20	1,00	3,0	M16	20	2,0	8,0
M8	8	1,2	4,0		30	2,0	8,0
	16	1,2	4,0		35	2,0	8,0
	30	1,2	4,0		40	2,0	8,0
	40	1,2	4,0				
M10	10	1,5	5,0				