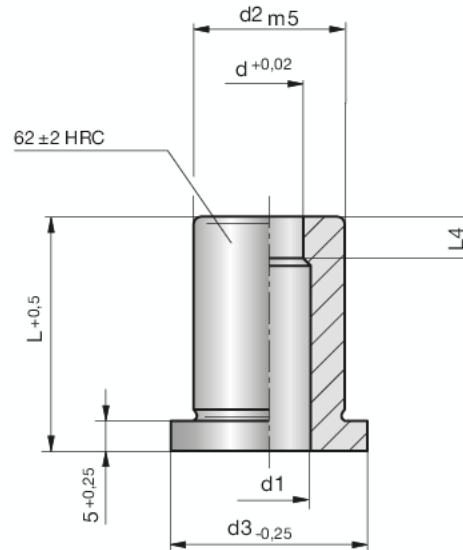


Schneidbuchsen

Cutting bushes

Matrices pour trous



SN1872B-HSS-

Mat.: HSS (1.3343)
ISO 8977 B*

SN1872B-HSS-
d-L-d2



4

X* — Stufung in mm
— graduation in mm
— progression en mm

| d | L | d2 | d3 | d1 (max.) | L4 (min) | X* (d1) |
|-------------|--------------|----|----|-----------|----------|---------|
| 1,0 - 2,4 | 20 | 5 | 8 | 2,8 | 2 | 0,1 |
| 1,6 - 3,0 | 20 / 25 | 6 | 9 | 3,5 | 3 | 0,1 |
| 2,0 - 3,5 | 20 / 25 | 8 | 11 | 4,0 | 4 | 0,1 |
| 2,5 - 5,0 | 20 / 25 / 32 | 10 | 13 | 5,8 | 4 | 0,1 |
| 4,0 - 7,0 | 20 / 25 / 32 | 13 | 16 | 8,0 | 5 | 0,1 |
| 6,0 - 9,0 | 20 / 25 / 32 | 16 | 19 | 9,5 | 5 | 0,1 |
| 8,0 - 11,0 | 20 / 25 / 32 | 20 | 23 | 12,0 | 8 | 0,1 |
| 10,7 - 16,0 | 20 / 25 / 32 | 25 | 28 | 17,3 | 8 | 0,5 |
| 15,0 - 20,0 | 20 / 25 / 32 | 32 | 35 | 20,7 | 8 | 0,5 |
| 19,0 - 27,0 | 25 / 32 | 40 | 43 | 27,7 | 8 | 0,5 |
| 26,0 - 36,0 | 32 | 50 | 53 | 37,0 | 8 | 0,5 |