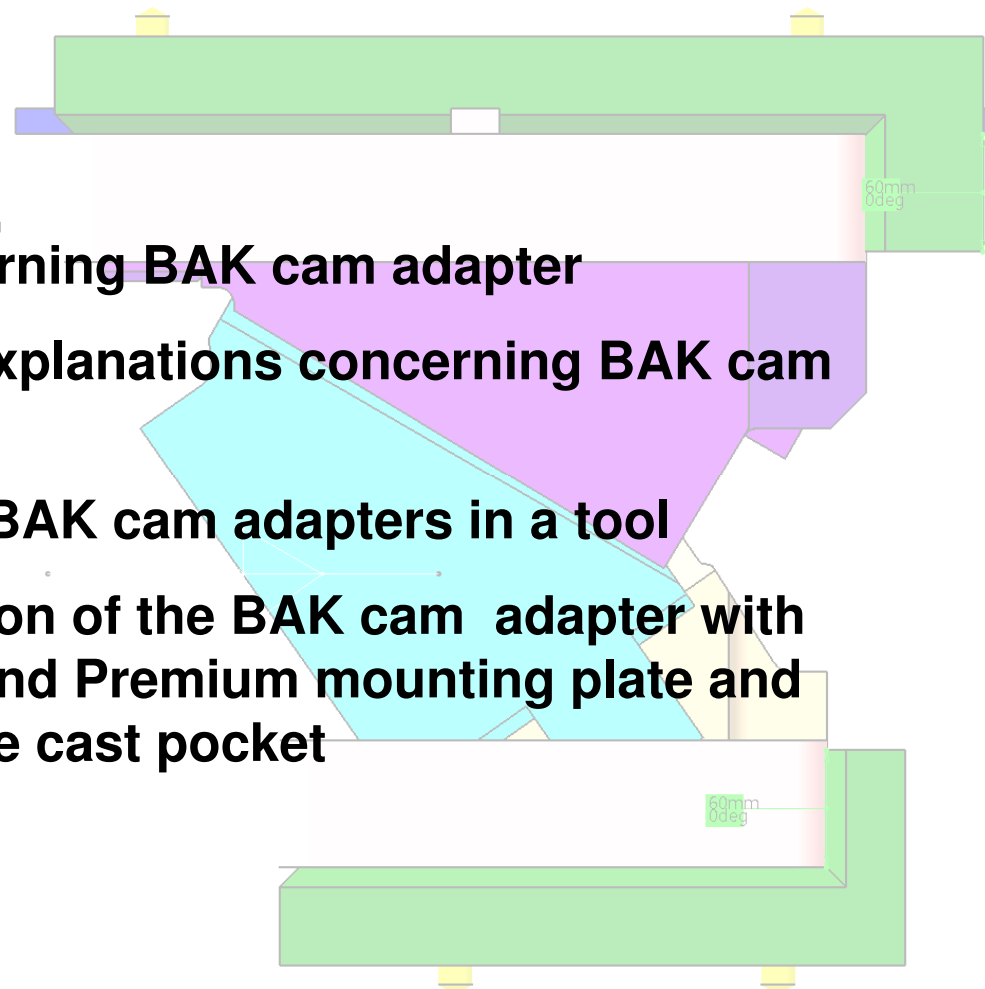


Legend:

- Information concerning BAK cam adapter
- Advantages and explanations concerning BAK cam adapter
- Integration of the BAK cam adapters in a tool
- Current modification of the BAK cam adapter with reference boring and Premium mounting plate and identification of the cast pocket

SN5650-PMO-0330-B-N
 xy plane
 yz plane
 zx plane
 Axis Systems
 Parameters
 Variante=STRACK_PMO_0330_35GRAD_BASIC_NUTENSTEIN
 INFO_Winkel_Arbeitsrichtung=35deg
 INFO_Winkel_Alpha=60deg
 INFO_Schieberart=oben
 Anschlussgeometrie_Schieberbett
 FP_Schulterung_Schieberbett=true
 FP_Aufmass_Anfuss_Schieberbett=10mm
 FP_breite_Schulter_Schieberbett=60mm
 Anschlussgeometrie_Treiber
 FP_Hoeh_Schulter_Treiber=60mm
 Bohrbearbeitung
 Translation_Schiebereinheit
 Stueckliste
 Parameter_Schieberhersteller
 Relations
 ELEMENTE_FUER_REPLACE
 HILFSELEMENTE_POSITIONIERUNG
 Group-HILFSELEMENTE_ACHSEN
 Group-ACHSENSYSTEME_REFERENZ_SCHIEBERHERSTELLER
 Diagramm



The construction of the BAK cam adapter conforms with the
Basic Directive for the construction of pressing tools with Catia V5 of the first October 2008

This directive should serve to support the introduction of CATIA V5 in the operating material construction and to achieve a uniform structure of the CAD models.

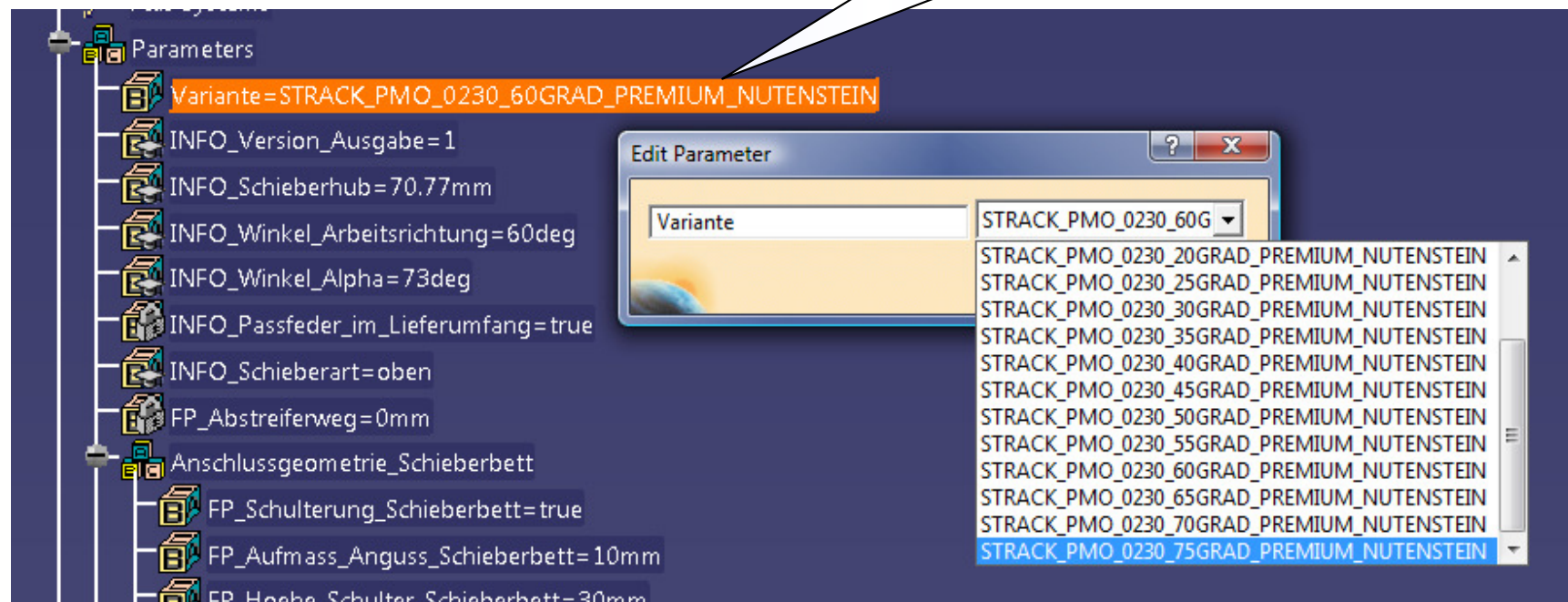
The aim is to construct models in such a way that the usability along the process chain is secured. The follow-on processes should maximally benefit from the delivered CATIA V5 data.

The BAK cam adapter should take over a lot of work from the constructing engineer of the tool.

On the following pages you will find some presentations concerning the advantages of the BAK cam adapter with explanations.

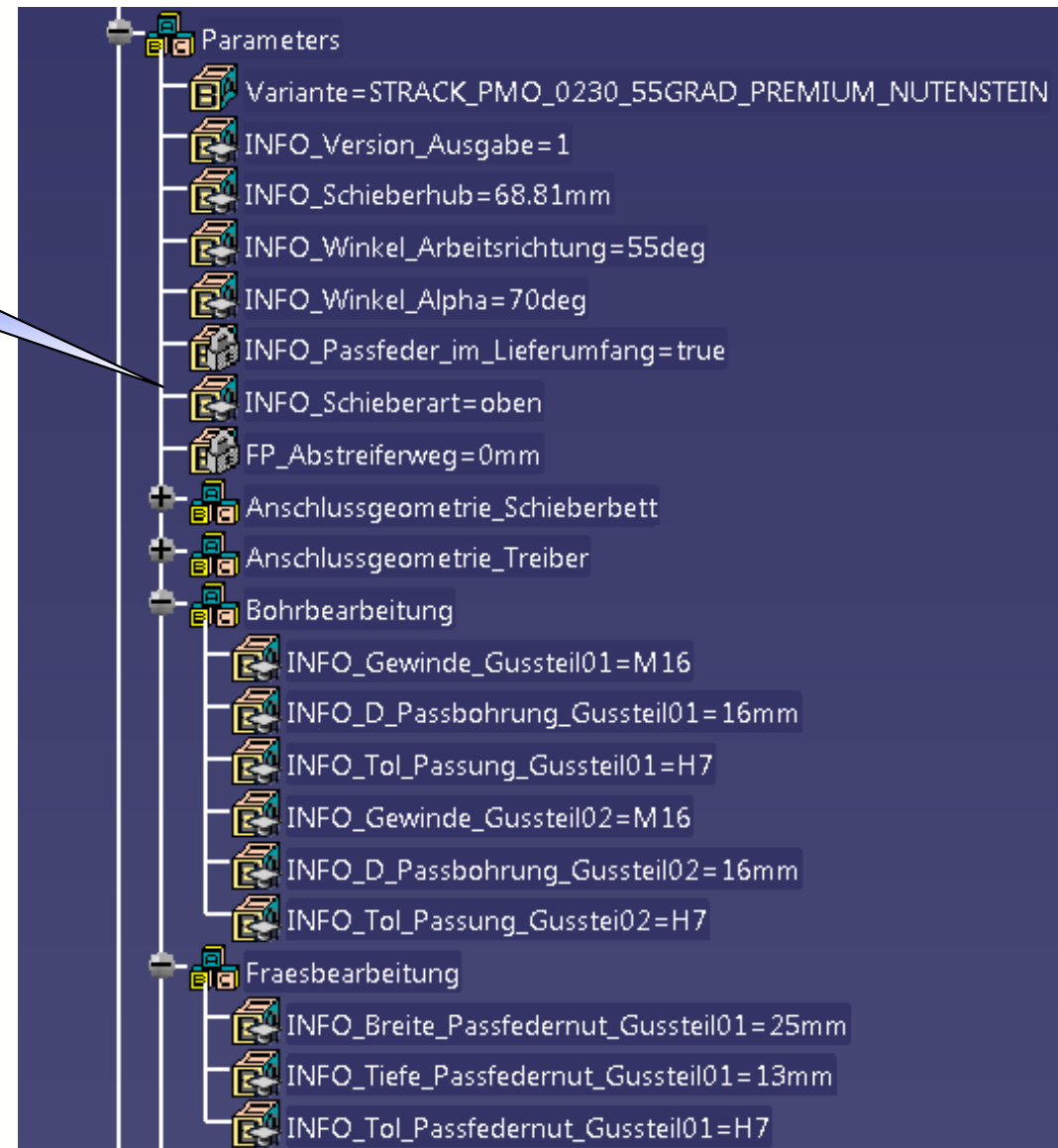
Advantages and explanations concerning the BAK cam adapter

This parameter is used to adjust the desired cam with the corresponding work direction by a pull-down menu.



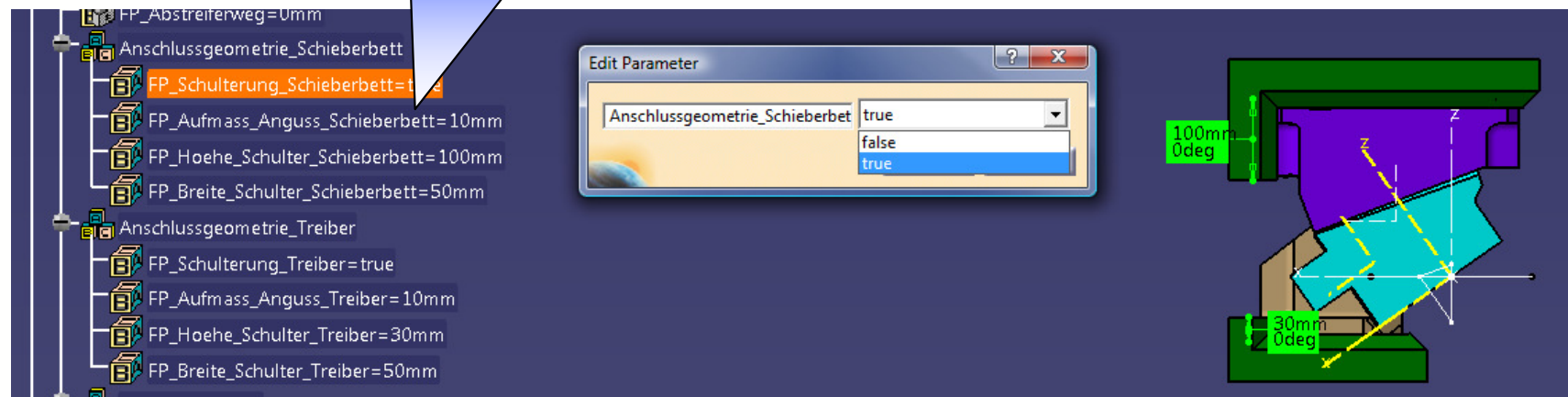
Advantages and explanations concerning the BAK cam adapter

All "INFO" parameters serve for information and can't be changed.

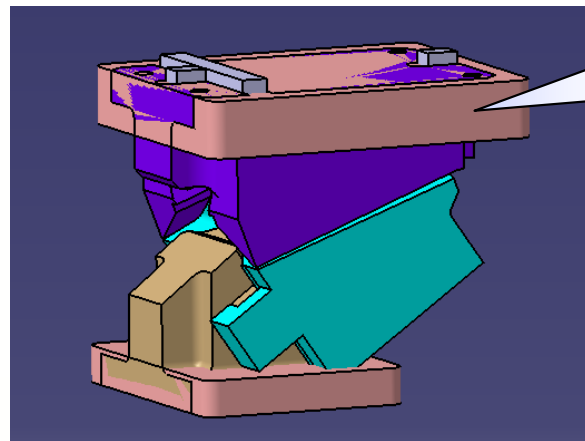
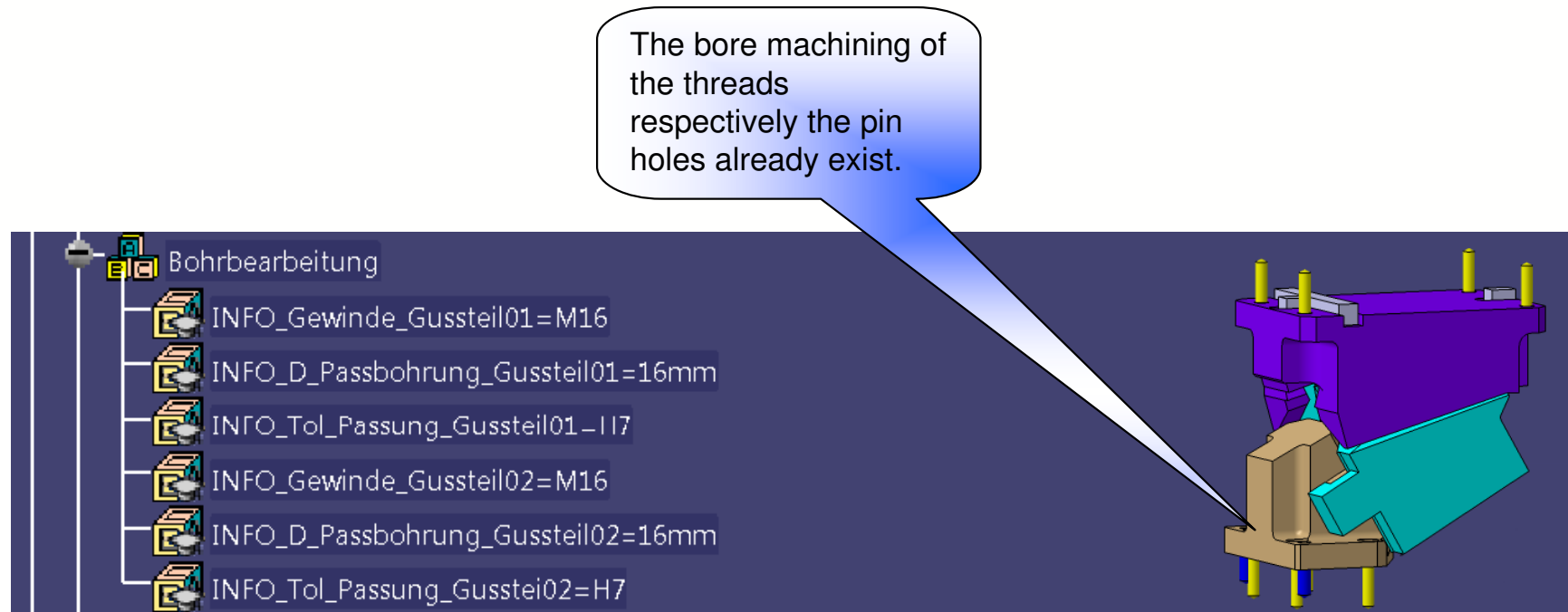


Advantages and explanations concerning the BAK cam adapter

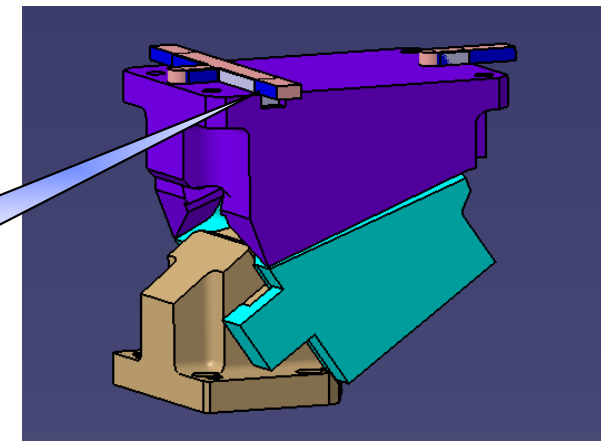
Cast- and cast-shoulder already existing, the shoulder can be switched on and off by an „FP“ parameter and can also be adjusted in height and thickness.



Advantages and explanations concerning the BAK cam adapter



Also the milling of the screw-on surfaces is integrated.

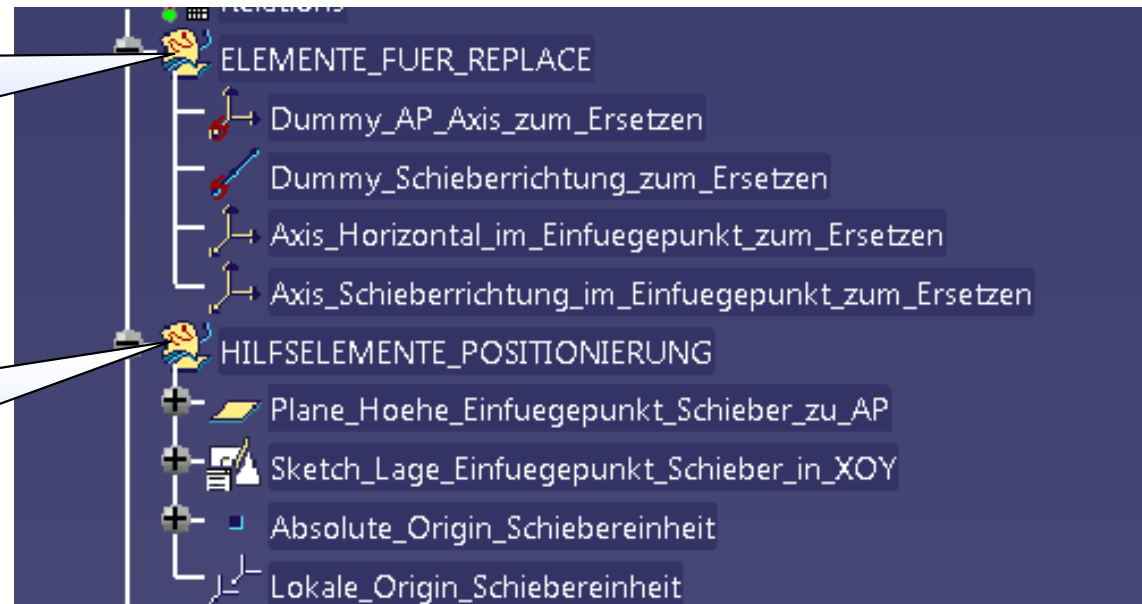


Also integrated is the milling of the feather key grooves.

Advantages and explanations concerning the BAK cam adapter

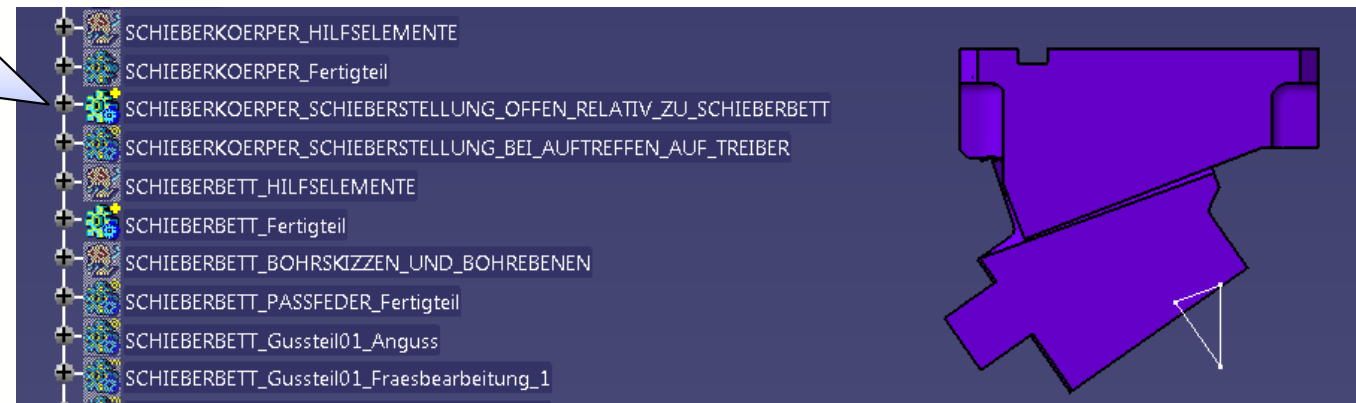
These geometric sets contain elements which serve for the assembly and positioning of the cam in the tool.

For a later modification of the position of the cam these elements are used.

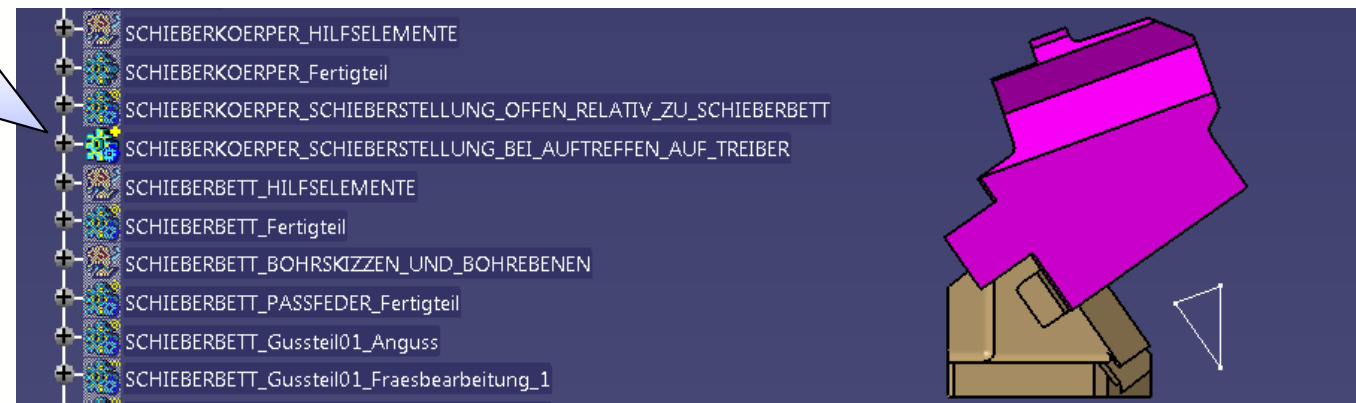


Advantages and explanation concerning the BAK cam adapter

Position of the
cam body with
opened press.

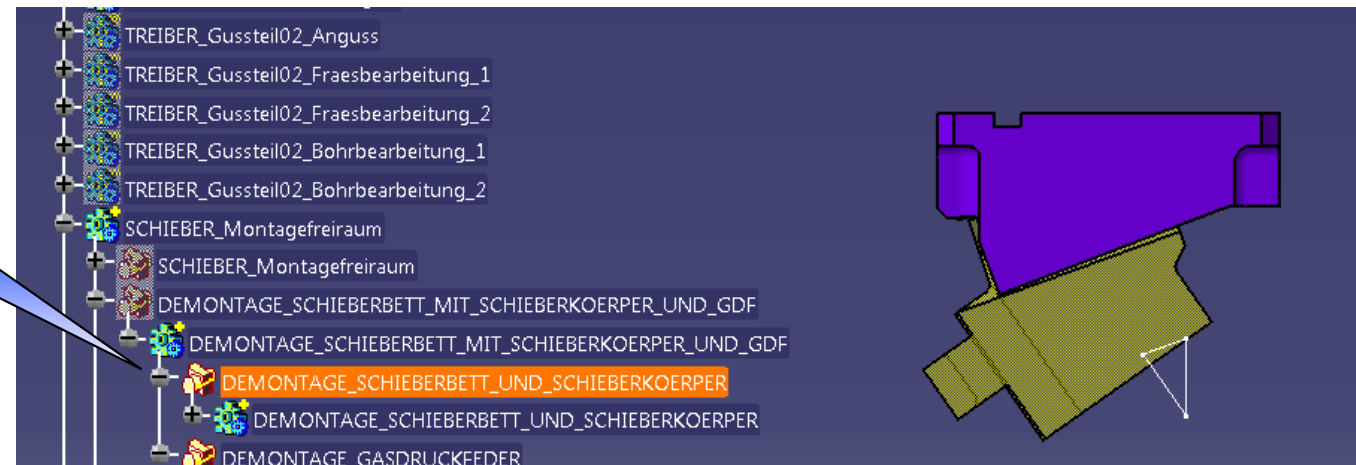


Position of the
cam body at the
first contact with
the driver.

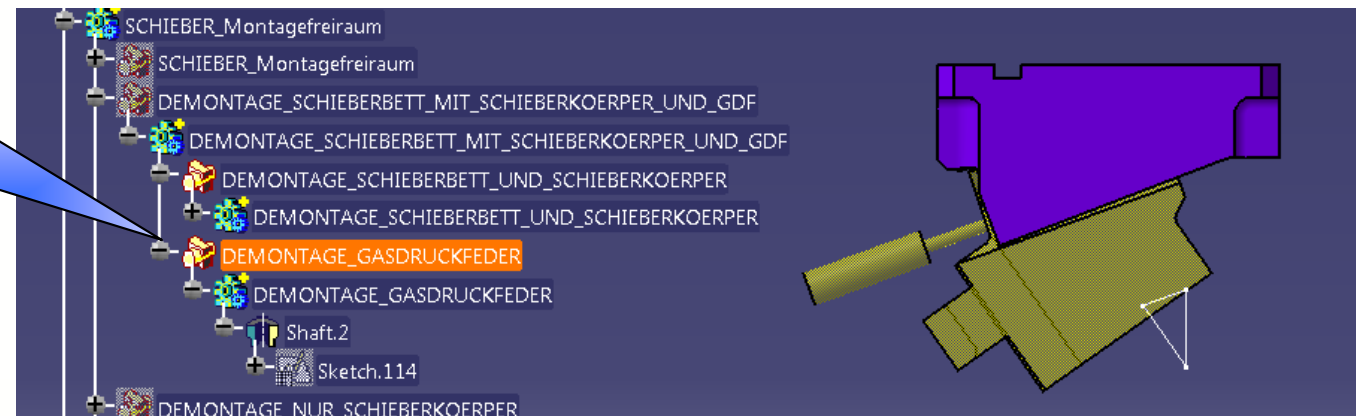


Advantages and explanations concerning the BAK cam adapter

Free space for dismounting cam bed with cam body



Free space for dismounting of the gas spring under the press



Advantages and explanations concerning the BAK cam adapter

Free space for dismounting of the cam body under the press

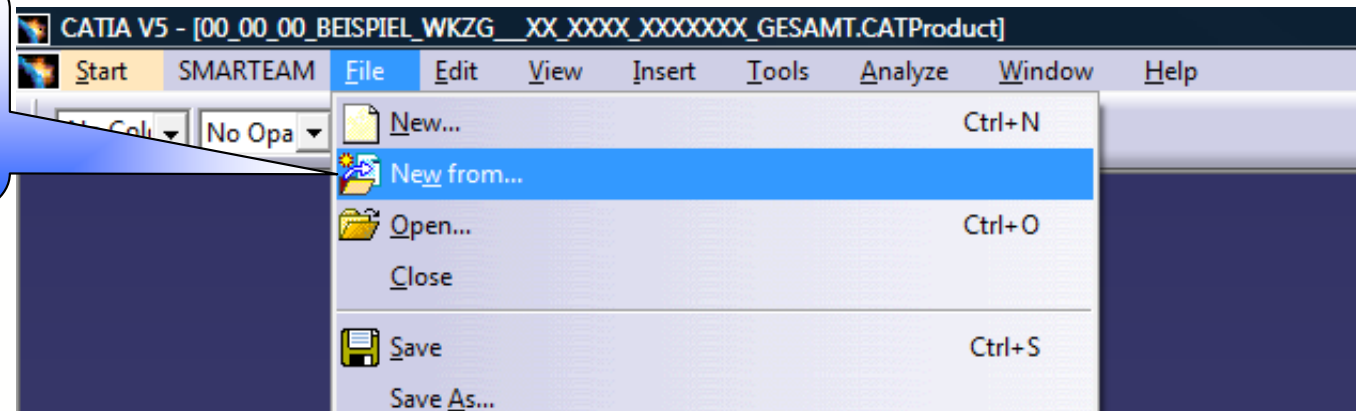


Cam installation space at closed tool

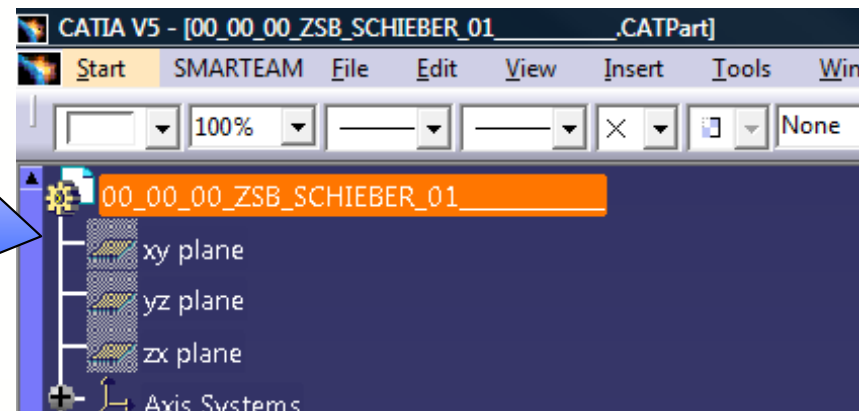


Integration of the BAK cam adapter in a tool

1. Open cam adapter with mit **"New from..."**

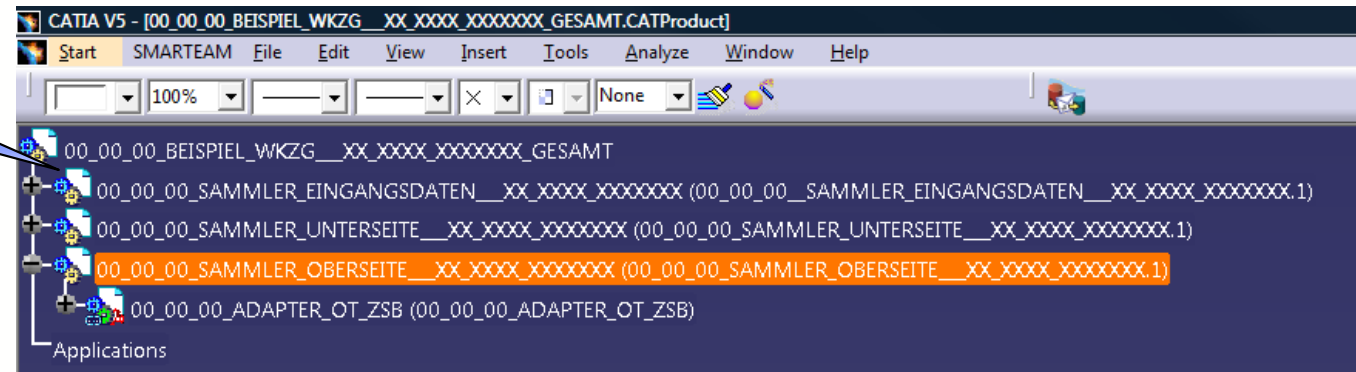


2. Rename the cam adapter and save it in the folder of the tool.

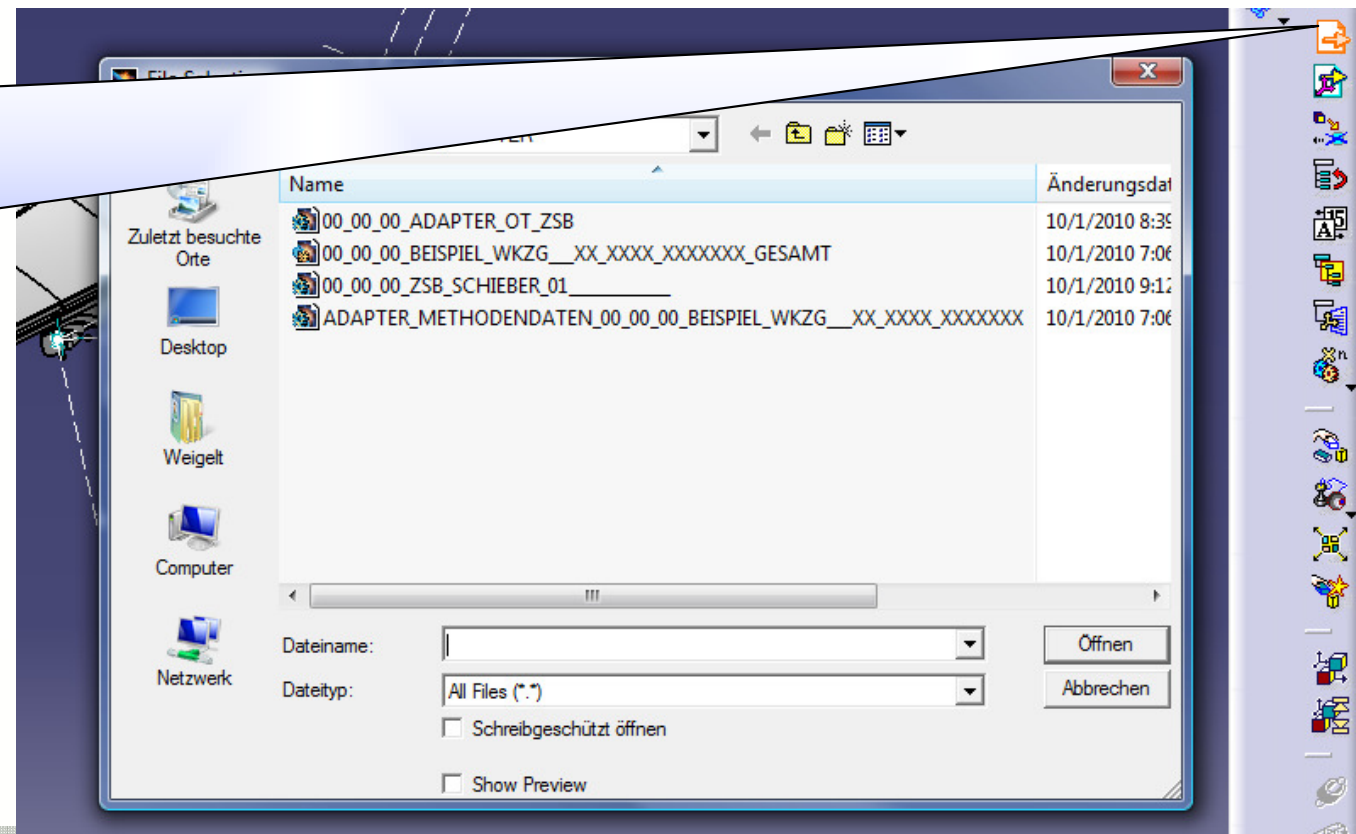


Integration of the BAK cam adapter in a tool

3. Open the tool

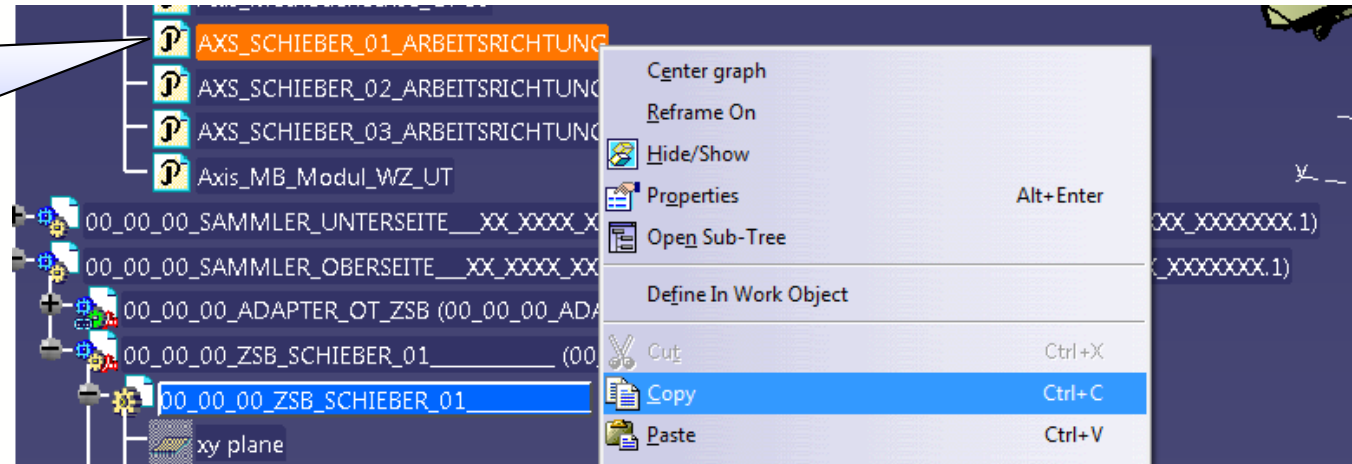


4. Integrate the cam adapter in the tool with
“Existing Component”

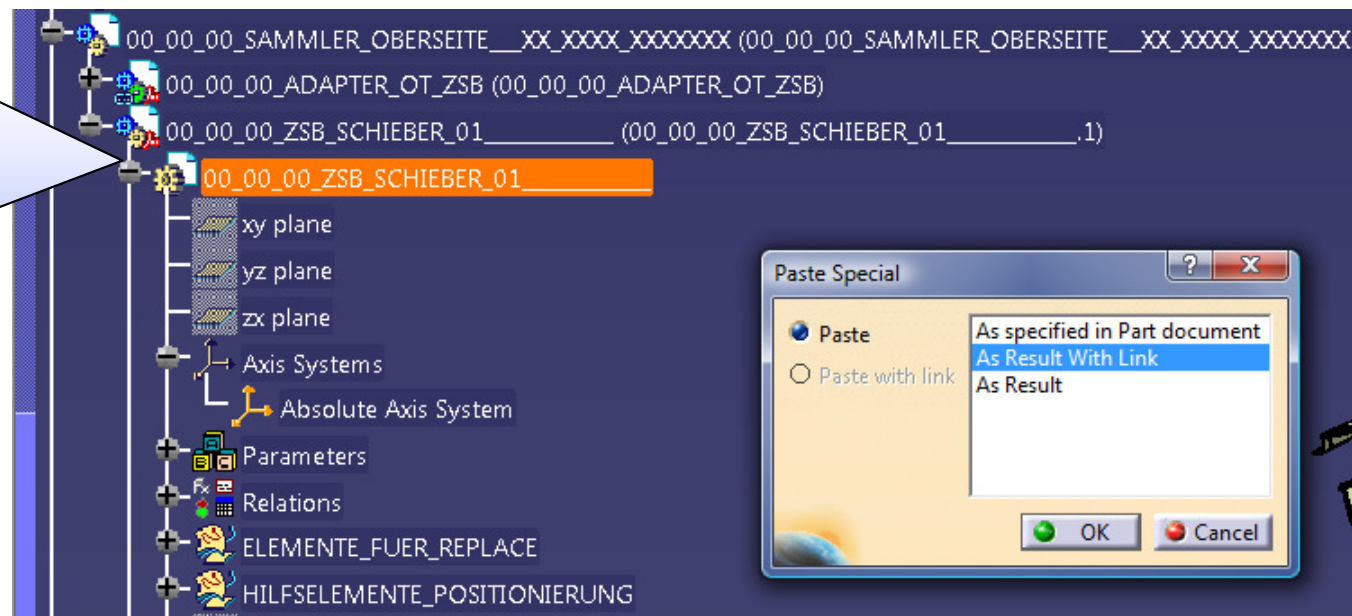


Integration of the BAK cam adapter in a tool

5. Now copy the cam axis out of the tool

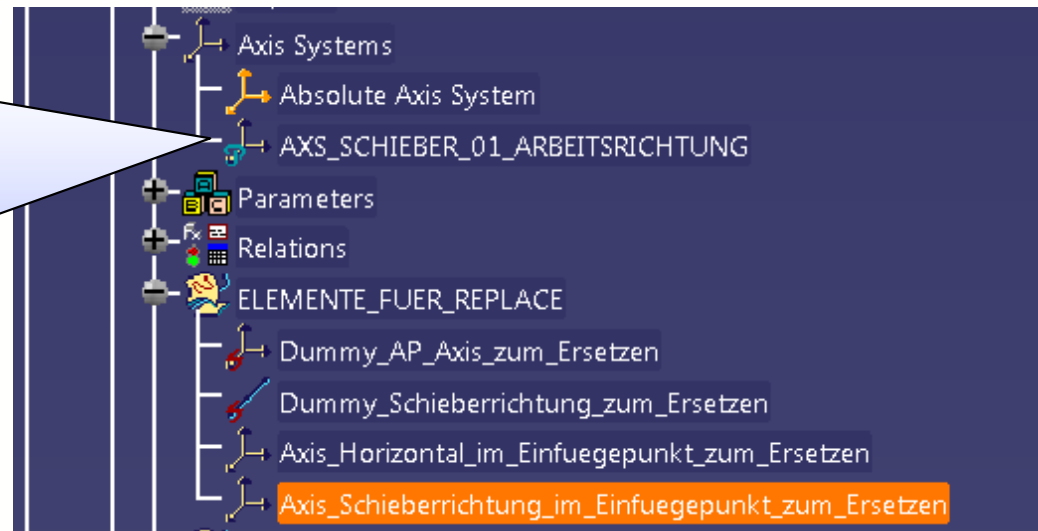


6. Insert “Paste Spezial” with option “As Result With Link”.

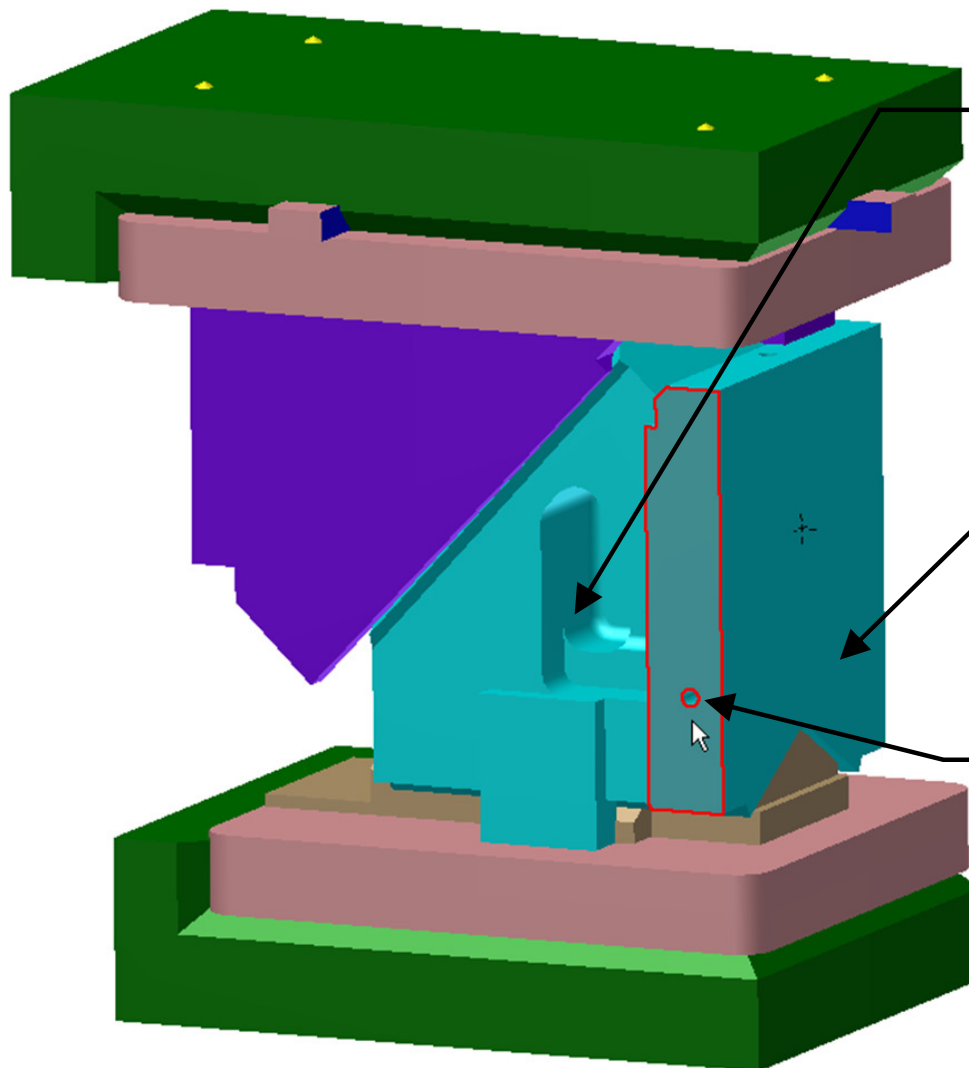


7. Now replace the axis
“**Axis_cam direction _ in _ the
insertion point _ for _
replacement**” by the copied
axis.

Here you have to take care that
the axes have the same
position in reference to the X,Y
and Z direction.



Reference boring, Premium mounting plate and Identification of the cast pocket



Cast pocket and gas spring chamber are inserted for a better recognisability of the maximal processing depth.

At the PREMIUM cam the removable mounting plate is visible.

Reference borings facilitate the machining on the CNC-machine.