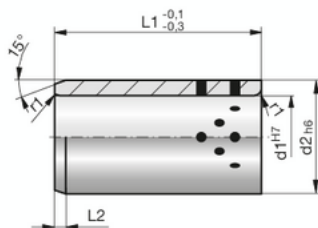


**Gleitführungsbuchsen mit Fest-
schmierstoff, selbstschmierend**

**Guide bushes with solid
lubricant, self-lubricating**

**Bagues pour guidage lisse avec
lubrifiant solide, autolubrifiantes**

1

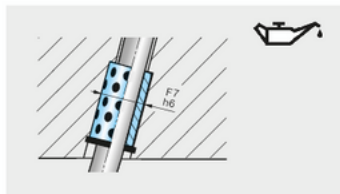


SN1731-

Mat.: Bronze
190-220 HB S10/3000
< 150 °C



SN1731-d1-L1

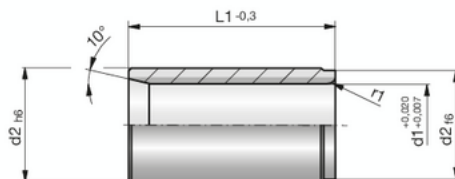
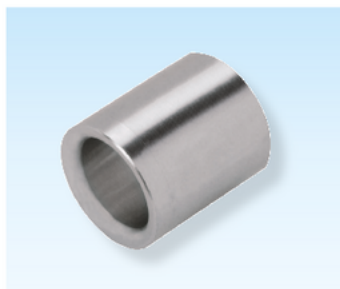


d1	L1	d2	L2	r1
20	25	28	4	0,75
20	40	28	4	0,75
25	30	33	4	0,75
25	50	33	4	0,75
30	35	38	4	0,75
30	50	38	4	0,75
35	40	44	4	0,75
35	60	44	4	0,75
40	40	50	4	1,50
40	70	50	4	1,50
45	50	60	4	1,50
45	80	60	4	1,50

**Gleitführungsbuchsen,
selbstschmierend**

**Guide bushes,
self-lubricating**

**Bagues pour guidage lisse,
autolubrifiantes**



SN1732-

Mat.: SNS Sintermetall/
Sintered metal/Métal
fritté



SN1732-d1-L1



d1	L1	d2	r1
19	32	28	3
19	60	28	3
20	32	28	3
20	60	28	3
24	35	35	3
24	60	35	3
25	35	35	3
25	60	35	3