

Schiebereinheiten

Slide units

Unités de tiroirs



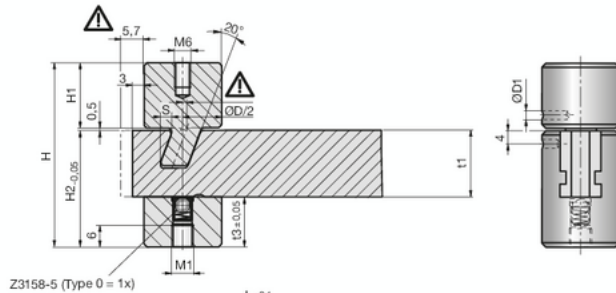
Z4290L-

Mat.: 1.2343
52HRC

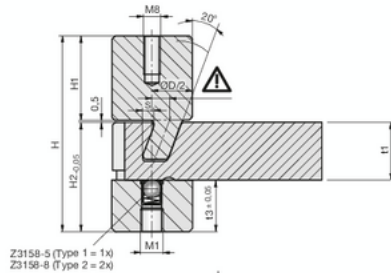
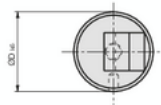
5



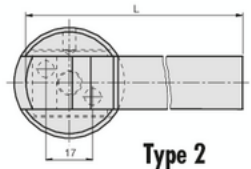
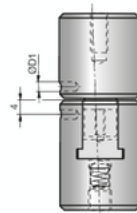
Z4290L-Type-L-D



Type 0



Type 1



Type 2

Type	L	D	B	S	H	H1	H2	t1	t3	D1	M1
0	80	16	10	2,7	44,0	15,0	28,5	16	12,5	3	M6
1	80	25	11	3,4	61,5	26,5	34,5	18	16,5	3	M6
2	100	40	22	6,4	60,5	20,0	40,0	28	12,0	4	M8