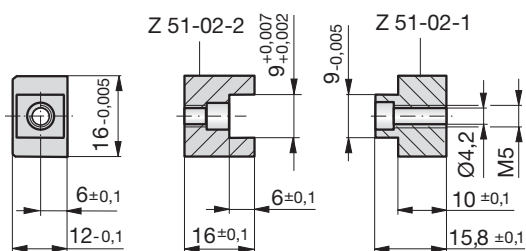


Zentriereinheiten

Centring elements

Unités de centrage



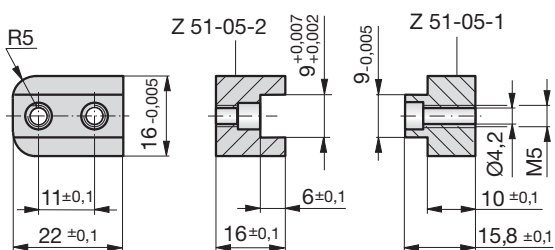
Z 51-02

Mat.: 1.2344/
52 - 54HRC
DLC

Ersatz für **Z 50**
Replacement for **Z 50**
Remplacement de **Z 50**



Z 51-02



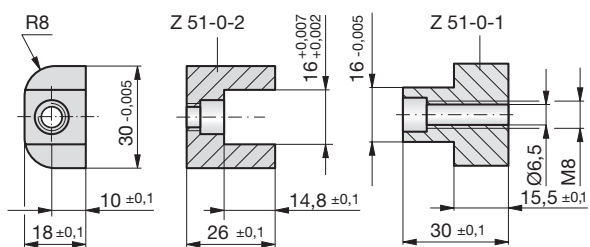
Z 51-05

Mat.: 1.2344/
52 - 54HRC
DLC

Ersatz für **Z 50**
Replacement for **Z 50**
Remplacement de **Z 50**



Z 51-05



Z 51-0

Mat.: 1.2344/
52 - 54HRC
DLC

Ersatz für **Z 50**
Replacement for **Z 50**
Remplacement de **Z 50**



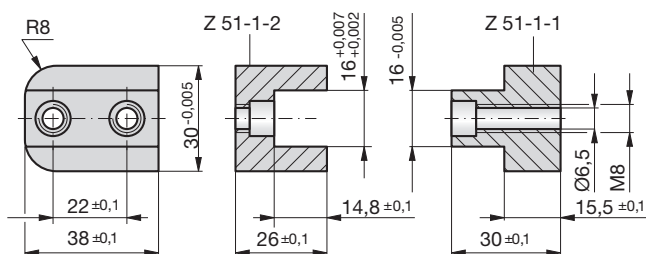
Z 51-0



Zentriereinheiten

Centring elements

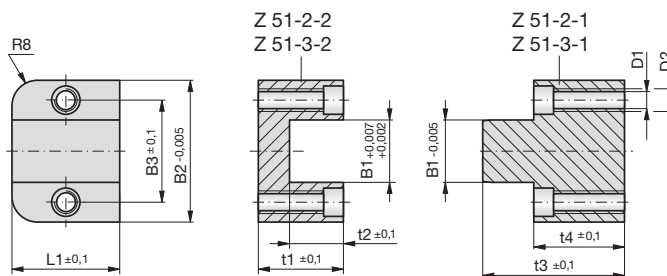
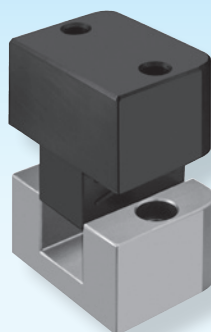
Unités de centrage


Z 51-1

 Mat.: 1.2344/
52 - 54HRC
DLC

 Ersatz für **Z 50**

 Replacement for **Z 50**

 Remplacement de **Z 50**

Z 51-

 Mat.: 1.2344/
52 - 54HRC
DLC


Type	B1	B2	B3	t1	t2	t3	t4	L1	D1	D2
2	20	50	35	29,8	20	48,8	29,8	38	6,5	M8
3	30	75	52	39,8	25	63,8	39,8	38	8,3	M10

 Ersatz für **Z 50**

 Replacement for **Z 50**

 Remplacement de **Z 50**