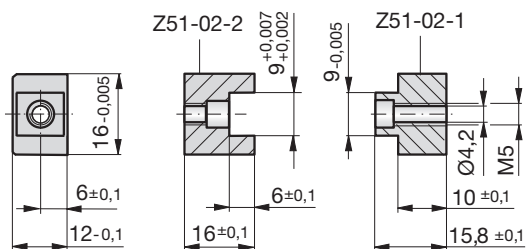


## Zentriereinheiten

## Centring elements

## Unités de centrage



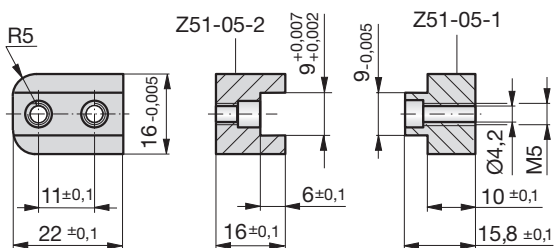
**Z51-02**

Mat.: 1.2344  
52 - 54HRC  
DLC

Ersatz für **Z50**  
Replacement for **Z50**  
Remplacement de **Z50**



Z51-02



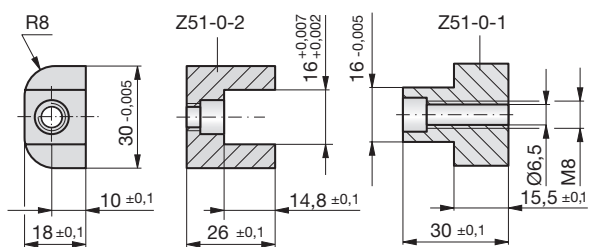
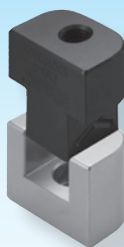
**Z51-05**

Mat.: 1.2344  
52 - 54HRC  
DLC

Ersatz für **Z50**  
Replacement for **Z50**  
Remplacement de **Z50**



Z51-05



**Z51-0**

Mat.: 1.2344  
52 - 54HRC  
DLC

Ersatz für **Z50**  
Replacement for **Z50**  
Remplacement de **Z50**



Z51-0

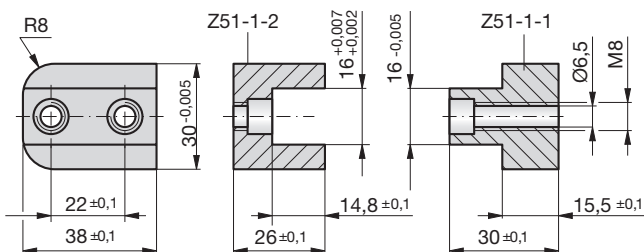


1

## Zentriereinheiten

## Centring elements

## Unités de centrage



**Z51-1**

Mat.: 1.2344  
52 - 54HRC  
DLC



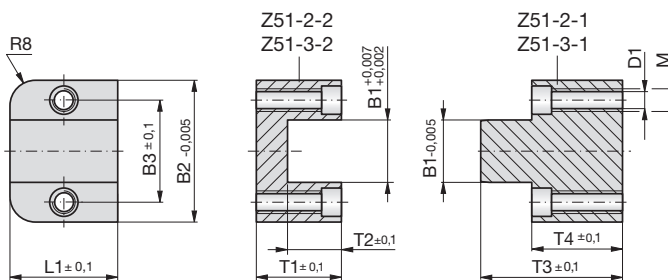
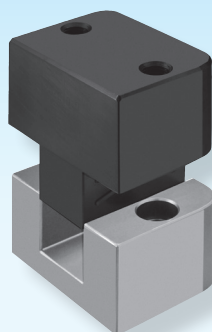
Z51-1



Ersatz für **Z50**

Replacement for **Z50**

Remplacement de **Z50**



**Z51-**

Mat.: 1.2344  
52 - 54HRC  
DLC



Z51-Type



Type	B1	B2	B3	T1	T2	T3	T4	L1	D1	M
2	20	50	35	29,8	20	48,8	29,8	38	6,5	M8
3	30	75	52	39,8	25	63,8	39,8	38	8,3	M10

Ersatz für **Z50**

Replacement for **Z50**

Remplacement de **Z50**